

Bendix

COMMERCIAL VEHICLE

*High performance solutions engineered
for heavy duty applications*



WWW.BENDIX.COM.AU

PREMIUM
STRENGTH

SUPERIOR
DURABILITY

COMMERCIAL
RANGE

*Put your foot down
with confidence™*

PROTRANS™ HD

The ultimate in strength and durability for super heavy duty applications.

PROTRANS™

High performance solutions for heavy duty applications.



© 2021 FMP Group (Australia) Pty Ltd.
Bendix is a trademark of Garrett
Advancing Motion Inc.

This book is subject to copyright. Except as permitted under the Copyright Act 1968 (Cth), no part of this book may be reproduced or transmitted in any form or by any means, or stored in any retrieval system of any nature, without the prior written permission of the copyright owner.

Whilst every endeavour is made to ensure that the information produced is correct, no responsibility for the contents of this supplement is accepted.

Reproduction of any kind whatsoever, in whole or in part, is subject to our express approval.

For this purpose, please contact the Marketing Department of FMP on (03) 9244 7000 or +61 3 5327 0211 from outside Australia.

For more information call us today:

FMP Group (Australia) Pty Ltd

Tel: 1800 819 666 (8am-5pm Mon-Fri EST)

+61 3 5327 0211 (overseas)

Fax: 1800 805 336

Email: orders@bendix.com.au

www.bendix.com.au



CONTENTS

COMMERCIAL VEHICLE RANGE INTRODUCTION

4-5

PROTRANS™ HD COMMERCIAL VEHICLE DISC BRAKE PADS

6-11

PROTRANS™ COMMERCIAL VEHICLE DISC BRAKE PADS

12-15

PROTRANS™ COMMERCIAL VEHICLE BRAKE SHOE KITS

16-19

BENDIX ANCILLARY SOLUTIONS

20



The Bendix Commercial Vehicle Range is now available, bringing advanced levels of performance and considerably longer life to pads, drums and rotors.

Superior stopping power & improved durability.

- Improved surface technology for better braking
- Resistance to high operating temperatures
- Reduced wear rates
- Quieter braking performance
- Comprehensive range across most applications
- Dependable and reliable performance
- Easy to install with no fuss
- Protects other brake components from wear
- Reduced replacement cycles – less vehicle downtime

IDENTIFYING BENDIX PART NUMBERS IS MADE EASY



PROTRANS™ HD & PROTRANS™ COMMERCIAL VEHICLE DISC PADS

1. Bendix part number
2. E-Mark regulation 90 approval
3. Batch code and process date



PROTRANS™ COMMERCIAL VEHICLE BRAKE SHOES

1. Bendix Lining Series Identifier
2. Friction Rating
3. E-Mark regulation 90 approval
4. Batch code and process date



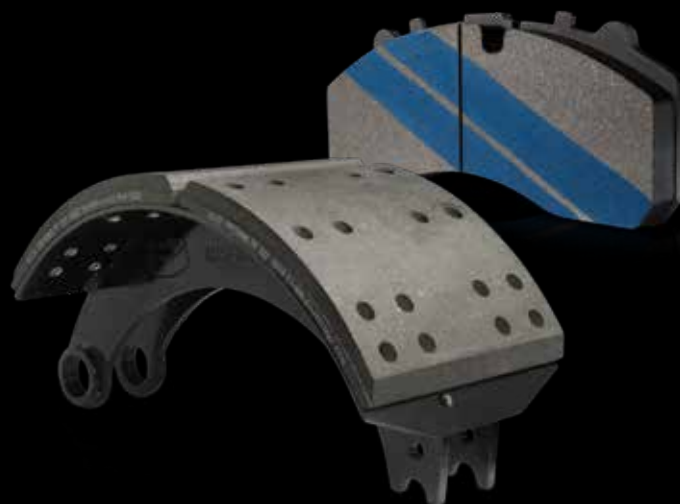
PROTRANS™

ENGINEERED EXCELLENCE

Today's commercial vehicles employ high levels of technology designed to meet the world's stringent safety and compliance regulations. With the advances in electronics controlling many aspects of the vehicle such as the engine, transmission and also the brakes, premium quality friction materials are essential.

Bendix is at the cutting edge of brake pad and brake shoe technology for modern commercial vehicles operating in Australia's unforgiving conditions. The range is extensive and designed specifically to meet the many and varied applications.

Bendix are leaders in brake technology by providing:



PREMIUM STRENGTH

When the brakes are applied on a fully loaded vehicle, the complete system must meet the massive forces involved in the deceleration. The strength that is inherently designed into Bendix products ensures the brake pads and shoes deliver what the system is demanding.

SUPERIOR DURABILITY

Because Australian commercial vehicle works so hard, Bendix builds premium quality into every aspect of the design and materials of every brake pad and brake shoe. With vehicles operating for thousands of kilometers in extreme conditions, Bendix understands the need for Superior Durability.

COMMERCIAL RANGE

COMMERCIAL RANGE
The Bendix commercial range features technology and build quality that today's vehicles need to operate at their premium design condition. The extensive number of products means there is a premium solution for every vehicle and load carrying trailer.

PROTRANS™ HD

COMMERCIAL VEHICLE DISC BRAKE PADS



To combat the extreme pressures that heavy duty vehicles such as Cement Agitators, Garbage Compactors or City Route buses are exposed to, Bendix has created Bendix Protrans™ HD. Protrans™ HD has a heavy-duty formulation designed to cope with high temperatures found in constant braking and full GVM loading which requires a higher performance brake pad. This, in turn addresses a fleets major issue of a multi-purpose pad's wear rate.

Bendix Protrans™ HD are suitable for General delivery, Medium Rigid, Line Haul and Trailer applications, are ECE-R90 (where homologated) and are FE rated (J661).

Bendix Protrans™ HD are in stock and available to order today.



FEATURES:

ECE Regulation 90 (ECE-R90) approval

OE quality

Low pad wear

Comprehensive range

Hardware included

BENEFITS:

Proven performance testing

Low fade, safety and durability

Extended servicing intervals

Covers most popular applications

Ready to fit



Light Rigid



Medium Rigid



Trailer



US Driveline
Prime Mover



European
Prime Mover



Route Bus



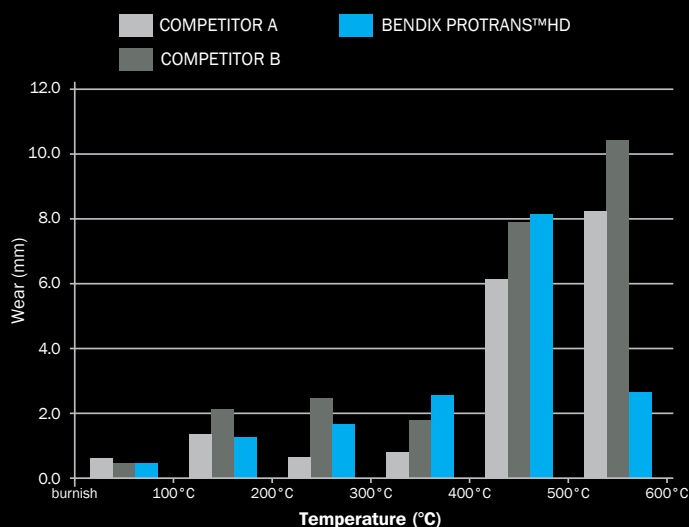
Compactor



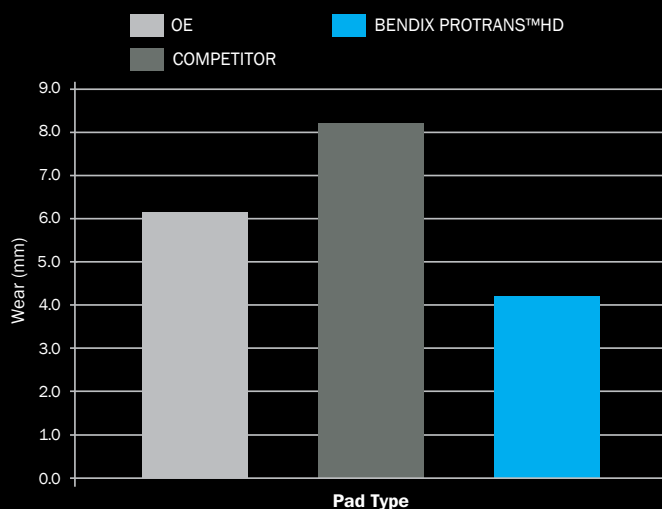
Agitator

Bendix Protrans™ HD meets or exceeds the performance of OE pads in a range of tests as demonstrated below.

AVERAGE PAD WEAR VS TEMPERATURE



ROTOR WEAR COMPARISON





Bendix Commercial Vehicle disc pads are specified to deliver superior braking performance

The ECE Regulation 90 (ECE-R90) specifies the design, construction, performance requirements and test protocols for strict European regulations. ECE R90 calls for brake pads to be tested for braking capabilities, speed sensitivity, cold performance, and may only deviate from the frictional characteristics of their original equipment counterparts by no more than 15%.



MATERIAL REFERENCE	APPLICATION	FRICTION CLASSIFICATION	MAXIMUM CONTINUOUS WORKING TEMPERATURE
Protrans™HD	Super Heavy Duty – Severe duty applications, Refuse Compactors, Concrete Agitators, Route bus applications. Frequent braking environments, heavy traffic, steep gradients. Long wear life at high brake temperature. Strong resistance to fade at very high temperatures.	FE	500°C

PROTRANS™ HD FOUNDATION BRAKES

PART NUMBER	FOUNDATION BRAKE
CVP013 PTHD	Meritor ELSA 1/D3
CVP020 PTHD	Knorr SB7000/SN7000
CVP023 PTHD	Meritor D Lisa
CVP036 PTHD	Knorr SB600/SN6000
CVP037 PTHD	Meritor D Duco
CVP088 PTHD	Meritor ELSA 2
CVP303 PTHD	Meritor ELSA 195-1/Meritor VGT 195
CVP304 PTHD	Meritor ELSA 225-1
CVP305 PTHD	Meritor ELSA 225-3
CVP500 PTHD	Knorr SM7
CVP501 PTHD	Knorr SL7

VEHICLE APPLICATIONS

MODEL	FOUNDATION BRAKE	YEAR RANGE	FITTING POSITION	PART NUMBER
DAF				
CF 75 FA	Knorr SB7000/SN7000	2001 - 2013	Front & Rear Axle	CVP020 PTHD
CF 75 FAD	Knorr SB7000/SN7000	2001 - 2013	Front & Rear Axle	CVP020 PTHD
CF 75 FAG	Knorr SB7000/SN7000	2001 - 2013	Front & Rear Axle	CVP020 PTHD
CF 75 FAR	Knorr SB7000/SN7000	2001 - 2013	Front & Rear Axle	CVP020 PTHD
CF 75 FAT	Knorr SB7000/SN7000	2001 - 2013	Front & Rear Axle	CVP020 PTHD
CF 75 FT	Knorr SB7000/SN7000	2001 - 2013	Front & Rear Axle	CVP020 PTHD
CF 85 FA	Knorr SB7000/SN7000	2001 - 2013	Front & Rear Axle	CVP020 PTHD
CF 85 FAC	Knorr SB7000/SN7000	2005 - On	Front & Rear Axle	CVP020 PTHD
CF 85 FAD	Knorr SB7000/SN7000	2001 - 2013	Front & Rear Axle	CVP020 PTHD
CF 85 FAG	Knorr SB7000/SN7000	2001 - 2013	Front & Rear Axle	CVP020 PTHD
CF 85 FAN	Knorr SB7000/SN7000	2006 - 2013	Front & Rear Axle	CVP020 PTHD
CF 85 FAQ	Knorr SB7000/SN7000	2006 - 2013	Front & Rear Axle	CVP020 PTHD
CF 85 FAR	Knorr SB7000/SN7000	2001 - 2013	Front & Rear Axle	CVP020 PTHD
CF 85 FAT	Knorr SB7000/SN7000	2001 - 2013	Front & Rear Axle	CVP020 PTHD
CF 85 FAX	Knorr SB7000/SN7000	2001 - 2013	Front & Rear Axle	CVP020 PTHD
CF 85 FT	Knorr SB7000/SN7000	2001 - 2013	Front & Rear Axle	CVP020 PTHD
CF 85 FTG	Knorr SB7000/SN7000	2001 - 2013	Front & Rear Axle	CVP020 PTHD
CF 85 FTP	Knorr SB7000/SN7000	2001 - 2013	Front & Rear Axle	CVP020 PTHD
CF 85 FTR	Knorr SB7000/SN7000	2006 - 2013	Front & Rear Axle	CVP020 PTHD
CF 85 FTS	Knorr SB7000/SN7000	2001 - 2013	Front & Rear Axle	CVP020 PTHD
CF 85 FTT	Knorr SB7000/SN7000	2001 - 2013	Front & Rear Axle	CVP020 PTHD
CF FAN	Knorr SB7000/SN7000	2015 - On	Front & Rear Axle	CVP020 PTHD
CF FAR	Knorr SB7000/SN7000	2015 - On	Front & Rear Axle	CVP020 PTHD
LF 55 FA	Knorr SB7000/SN7000	2001 - On	Front & Rear Axle	CVP020 PTHD
XF 105 FA	Knorr SB7000/SN7000	2005 - On	Front & Rear Axle	CVP020 PTHD
XF 95 FA	Knorr SB7000/SN7000	2002 - 2006	Front & Rear Axle	CVP020 PTHD
XF FAK	Knorr SB7000/SN7000	2012 - On	Front & Rear Axle	CVP020 PTHD
FUSO				
Canter		2008 - 2011	Front Axle	CVP1113 PTHD
Canter		2008 - 2011	Rear Axle	CVP1144 PTHD
Canter		1998 - 2002	Front Axle	CVP1315 PTHD
Canter		1996 - 2002	Front Axle	CVP1446 PTHD
Canter		2005 - On	Rear Axle	CVP1945 PTHD
HINO				
Hino		2000 - 2007	Front Axle	CVP1293 PTHD
Dutro		2007 - On	Front & Rear Axle	CVP1992 PTHD
ISUZU				
NLR 200		2007 - On	Front & Rear Axle	CVP1992 PTHD
NLR 275		2010 - On	Front & Rear Axle	CVP1992 PTHD
NPR 66 P		2003 - On	Front & Rear Axle	CVP1992 PTHD

VEHICLE APPLICATIONS *(continued)*

MODEL	FOUNDATION BRAKE	YEAR RANGE	FITTING POSITION	PART NUMBER
IVECO				
Eurocargo I-II	Knorr SB7000/SN7000	2000 - 2015	Front & Rear Axle	CVP020 PTHD
Eurostar LD	Knorr SB7000/SN7000	1993 - 2002	Front & Rear Axle	CVP020 PTHD
Eurotech MH	Knorr SB7000/SN7000	1998 - On	Front & Rear Axle	CVP020 PTHD
Eurotech MP	Knorr SB7000/SN7000	1992 - On	Front & Rear Axle	CVP020 PTHD
Eurotech MT	Knorr SB7000/SN7000	1992 - 1998	Front & Rear Axle	CVP020 PTHD
Eurotrakker MP	Knorr SB7000/SN7000	1998 - 2004	Front & Rear Axle	CVP020 PTHD
Stralis	Knorr SB7000/SN7000	2005 - On	Front & Rear Axle	CVP020 PTHD
Stralis AD	Knorr SB7000/SN7000	2003 - On	Front & Rear Axle	CVP020 PTHD
Stralis AS	Knorr SB7000/SN7000	2002 - On	Front & Rear Axle	CVP020 PTHD
Stralis AT	Knorr SB7000/SN7000	2003 - On	Front & Rear Axle	CVP020 PTHD
Stralis ES	Knorr SB7000/SN7000	2004 - On	Front & Rear Axle	CVP020 PTHD
Tector	Knorr SB7000/SN7000	2012 - On	Front & Rear Axle	CVP020 PTHD
Trakker AD	Knorr SB7000/SN7000	2005 - On	Front & Rear Axle	CVP020 PTHD

MAN				
F2000	Meritor ELSA 1/D3	1994 - On	Front & Rear Axle	CVP013 PTHD
HOCL	Meritor ELSA 1/D3	1999 - 2014	Front & Rear Axle	CVP013 PTHD
Lion'r Comfort	Meritor ELSA 1/D3	1996 - On	Front & Rear Axle	CVP013 PTHD
Lion's City	Meritor ELSA 1/D3	2009 - On	Front & Rear Axle	CVP013 PTHD
M 2000 L	Meritor ELSA 1/D3	1997 - 2007	Front & Rear Axle	CVP013 PTHD
NL 280	Meritor ELSA 1/D3	2000 - 2004	Front & Rear Axle	CVP013 PTHD
TGA	Meritor ELSA 1/D3	2000 - On	Front & Rear Axle	CVP013 PTHD
ÜL 313	Meritor ELSA 1/D3	1996 - On	Front & Rear Axle	CVP013 PTHD
TGM	Knorr SB7000/SN7000	2005 - On	Front & Rear Axle	CVP020 PTHD
TGS	Knorr SB7000/SN7000	2007 - On	Front & Rear Axle	CVP020 PTHD
TGX	Knorr SB7000/SN7000	2007 - On	Front & Rear Axle	CVP020 PTHD
TGM	Knorr SB600/SN6000	2005 - On	Front & Rear Axle	CVP036 PTHD
SÜ SÜ 293	Meritor ELSA 2	2003 - On	Front & Rear Axle	CVP088 PTHD
TGL	Meritor ELSA 2	2005 - On	Front & Rear Axle	CVP088 PTHD

MERCEDES BENZ				
O 404 Bus	Meritor ELSA 1/D3	1991 - 1999	Front & Rear Axle	CVP013 PTHD
Actros	Knorr SB7000/SN7000	1996 - 2008	Front & Rear Axle	CVP020 PTHD
Actros MP2 / MP3	Knorr SB7000/SN7000	2002 - On	Front & Rear Axle	CVP020 PTHD
Axor 2	Knorr SB7000/SN7000	2004 - On	Front & Rear Axle	CVP020 PTHD
Citaro O 530	Knorr SB7000/SN7000	1998 - On	Front & Rear Axle	CVP020 PTHD
OF 1617	Knorr SB7000/SN7000	1983 - On	Front & Rear Axle	CVP020 PTHD
OF 1621	Knorr SB7000/SN7000	1983 - On	Front & Rear Axle	CVP020 PTHD
OH 1316	Knorr SB7000/SN7000	1970 - On	Front & Rear Axle	CVP020 PTHD
OH 1518	Knorr SB7000/SN7000	1970 - On	Front & Rear Axle	CVP020 PTHD
Touro O 500	Knorr SB7000/SN7000	2001 - On	Front & Rear Axle	CVP020 PTHD
Atego	Knorr SB600/SN6000	1998 - 2004	Front & Rear Axle	CVP036 PTHD
Atego 2	Knorr SB600/SN6000	2004 - On	Front & Rear Axle	CVP036 PTHD
Tourino O 510	Knorr SB600/SN6000	2003 - On	Front & Rear Axle	CVP036 PTHD
ACTROS MP4 / MP5	Knorr SM7	2011 - On	Front & Rear Axle	CVP500 PTHD
ACTROS MP4 / MP5	Knorr SL7	2011 - On	Front & Rear Axle	CVP501 PTHD

MITSUBISHI				
Canter		1996 - 2001	Rear Axle	CVP1945 PTHD

NEOPLAN				
Starliner N 516	Knorr SB7000/SN7000	2002 - On	Front & Rear Axle	CVP020 PTHD

VEHICLE APPLICATIONS *(continued)*

MODEL	FOUNDATION BRAKE	YEAR RANGE	FITTING POSITION	PART NUMBER
RENAULT				
Premium 2	Meritor ELSA 195-1/Meritor VGT 195	2005 - On	Front & Rear Axle	CVP303 PTHD
SCANIA				
4 - series bus 94	Knorr SB7000/SN7000	1999 - 2010	Front & Rear Axle	CVP020 PTHD
4 - series T 114	Knorr SB7000/SN7000	1997 - 2008	Front & Rear Axle	CVP020 PTHD
4 - series T 124	Knorr SB7000/SN7000	1995 - 2008	Front & Rear Axle	CVP020 PTHD
4 - series T 144	Knorr SB7000/SN7000	1995 - 2008	Front & Rear Axle	CVP020 PTHD
4 - series T 94	Knorr SB7000/SN7000	1996 - 2008	Front & Rear Axle	CVP020 PTHD
4-Series 114	Knorr SB7000/SN7000	1996 - 2008	Front & Rear Axle	CVP020 PTHD
4-Series 124	Knorr SB7000/SN7000	1996 - 2008	Front & Rear Axle	CVP020 PTHD
4-Series 144	Knorr SB7000/SN7000	1995 - 2008	Front & Rear Axle	CVP020 PTHD
4-Series 164	Knorr SB7000/SN7000	2000 - 2008	Front & Rear Axle	CVP020 PTHD
4-Series 94	Knorr SB7000/SN7000	1996 - 2008	Front & Rear Axle	CVP020 PTHD
K - series	Knorr SB7000/SN7000	2006 - On	Front & Rear Axle	CVP020 PTHD
P,G,R,T - series	Knorr SB7000/SN7000	2004 - On	Front & Rear Axle	CVP020 PTHD
SETRA				
Series 300	Meritor ELSA 1/D3	1996 - On	Front & Rear Axle	CVP013 PTHD
Series 400	Knorr SB7000/SN7000	2001 - On	Front & Rear Axle	CVP020 PTHD
TOYOTA				
Coaster		1982 - 1993	Front Axle	CVP394 PTHD
Dyna		1984 - 2006	Front Axle	CVP394 PTHD
Dyna		1993 - 2003	Front Axle	CVP1293 PTHD
Dyna		1995 - 2006	Front & Rear Axle	CVP1992 PTHD

VEHICLE APPLICATIONS *(continued)*

MODEL	FOUNDATION BRAKE	YEAR RANGE	FITTING POSITION	PART NUMBER
VOLVO				
FH 12	Meritor D Duco	2001 - On	Front & Rear Axle	CVP037 PTHD
FH 16	Meritor D Duco	1995 - On	Front & Rear Axle	CVP037 PTHD
FM 12	Meritor D Duco	1998 - 2005	Front & Rear Axle	CVP037 PTHD
FM 9	Meritor D Duco	2001 - 2005	Front & Rear Axle	CVP037 PTHD
FH	Meritor ELSA 195-1/Meritor VGT 195	2005 - On	Front & Rear Axle	CVP303 PTHD
FL II	Meritor ELSA 225-1	2006 - On	Front & Rear Axle	CVP304 PTHD
FL III	Meritor ELSA 225-1	2013 - On	Front & Rear Axle	CVP304 PTHD
FE	Meritor ELSA 225-3	2006 - On	Front & Rear Axle	CVP305 PTHD
FE II	Meritor ELSA 225-3	2012 - On	Front & Rear Axle	CVP305 PTHD
FH 16 II	Meritor ELSA 225-3	2012 - On	Front & Rear Axle	CVP305 PTHD
FH II	Meritor ELSA 225-3	2012 - On	Front & Rear Axle	CVP305 PTHD
FM 300	Meritor ELSA 225-3	2005 - On	Front & Rear Axle	CVP305 PTHD
FM II	Meritor ELSA 225-3	2013 - On	Front & Rear Axle	CVP305 PTHD
FMX	Meritor ELSA 225-3	2010 - On	Front & Rear Axle	CVP305 PTHD
FMX II	Meritor ELSA 225-3	2012 - On	Front & Rear Axle	CVP305 PTHD
VOLVO BUS				
8500	Meritor D Lisa	1999 - On	Front & Rear Axle	CVP023 PTHD
8700	Meritor D Lisa	1999 - On	Front & Rear Axle	CVP023 PTHD
9700	Meritor D Lisa	2001 - On	Front & Rear Axle	CVP023 PTHD
9900	Meritor D Lisa	2001 - On	Front & Rear Axle	CVP023 PTHD
B10 B10	Meritor D Lisa	1978 - 2003	Front & Rear Axle	CVP023 PTHD
B12 B 12	Meritor D Lisa	2006 - On	Front & Rear Axle	CVP023 PTHD
B7	Meritor D Lisa	1998 - On	Front & Rear Axle	CVP023 PTHD



PROTRANS™

COMMERCIAL VEHICLE DISC BRAKE PADS



Heavy commercial vehicles travel on average 40,000 to 60,000 kilometres per year in Australia. The braking systems for these vehicles face demanding & severe operating conditions and hence need to perform consistently at their optimal best.



- Bendix Protrans™ disc pads continue to give you exceptional reliability and quality performance vital to your commercial vehicles.
- Packed full of features Bendix Commercial Vehicle disc Brake Pads offer ECE R90 certification, premium friction materials, Titanium Bedding-in technology and all of the hardware you need for replacement.



On the highway...



in city traffic...



or the long haul.

FEATURES:

ECE Regulation 90 (ECE-R90) approval

OE quality

Low pad wear

Comprehensive range

Hardware included

BENEFITS:

Proven performance testing

Low fade, safety and durability

Extended servicing intervals

Covers most popular applications

Ready to fit

Bendix Commercial Vehicle disc pads are specified to deliver superior braking performance

The ECE Regulation 90 (ECE-R90) specifies the design, construction, performance requirements and test protocols for strict European regulations. ECE R90 calls for brake pads to be tested for braking capabilities, speed sensitivity, cold performance, and may only deviate from the frictional characteristics of their original equipment counterparts by no more than 15%.





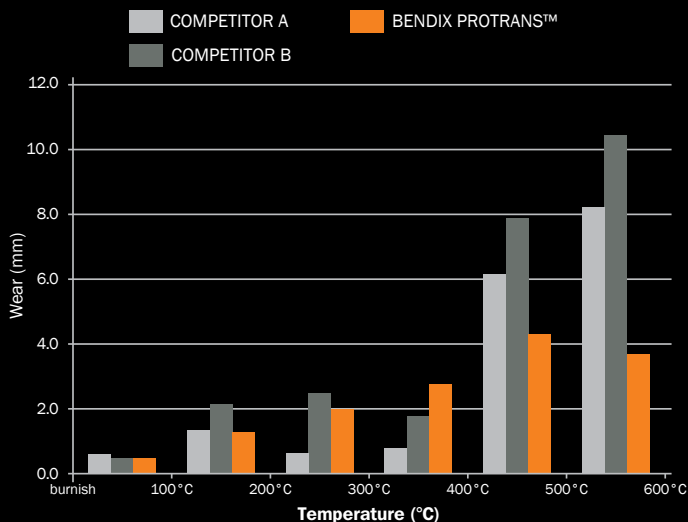
Not only does Bendix Protrans™ deliver advanced levels of stopping power, reliability, and reduced noise, the inbuilt durability adds to the competitive value on a cost per kilometer basis.

SUPERIOR FRICTION STABILITY

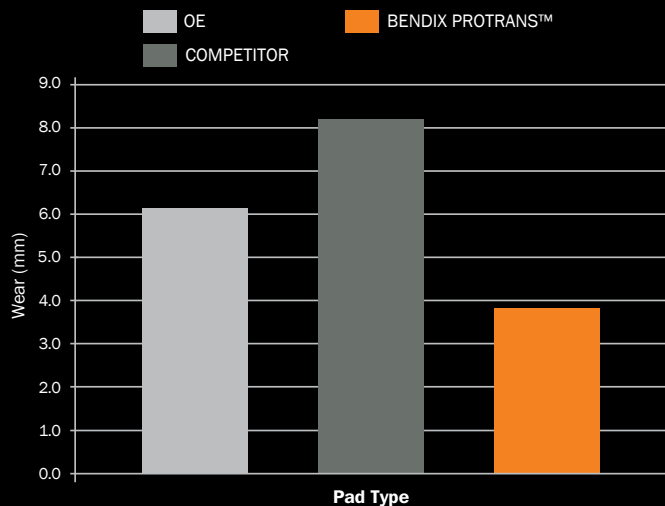
Bendix Protrans™ disc pads have a strong, predictable friction level regardless of temperature, speed or axle load. This material is designed for harsh conditions and is validated to OE specification, for low wear and long life, particularly at high temperatures. The range includes references to cover most popular commercial vehicle applications.

Bendix Protrans™ meets or exceeds the performance of OE pads in a range of tests as demonstrated below.

AVERAGE PAD WEAR VS TEMPERATURE



ROTOR WEAR COMPARISON



MATERIAL REFERENCE	APPLICATION	FRICTION CLASSIFICATION	MAXIMUM CONTINUOUS WORKING TEMPERATURE
Protrans™	Heavy Duty – Metro and line haul environments, Medium rigid, Coach and Trailer applications. Long wear life at medium to high temperature. Strong braking performance from cold.	GF	500°C

PROTRANS™ FOUNDATION BRAKES

PART NUMBER	FOUNDATION BRAKE
CVP021 PT	Wabco 1000V-G
CVP032 PT	Wabco PAN 17
CVP035 PT	Knorr SB 5000
CVP090 PT	Wabco PAN 19-1

VEHICLE APPLICATIONS

MODEL	FOUNDATION BRAKE	YEAR RANGE	FITTING POSITION	PART NUMBER
DAF				
LF 45 FA	Wabco PAN 17	2006 - On	Front & Rear Axle	CVP032 PT
LF 55 FA	Wabco PAN 19-1	2001 - On	Front & Rear Axle	CVP090 PT
LF 55 FT	Wabco PAN 19-1	2001 - On	Front & Rear Axle	CVP090 PT
LF FA 230	Wabco PAN 19-1	2017 - On	Front & Rear Axle	CVP090 PT
LF FT 310	Wabco PAN 19-1	2013 - On	Front & Rear Axle	CVP090 PT
MAN				
L2000	Wabco 1000V-G	1993 - 2006	Front & Rear Axle	CVP021 PT
L2000	Wabco PAN 17	1993 - 2006	Front & Rear Axle	CVP032 PT
M 2000 L	Wabco PAN 17	1995 - On	Front & Rear Axle	CVP032 PT
M 2000 M	Wabco PAN 17	2003 - 2005	Front & Rear Axle	CVP032 PT
TGL 10	Knorr SB 5000	2005 - On	Front & Rear Axle	CVP035 PT
TGL 12	Knorr SB 5000	2005 - On	Front & Rear Axle	CVP035 PT



VEHICLE APPLICATIONS *(continued)*

MODEL	FOUNDATION BRAKE	YEAR RANGE	FITTING POSITION	PART NUMBER
MERCEDES BENZ				
ATEGO	Knorr SB 5000	1998 - 2004	Front & Rear Axle	CVP035 PT
ATEGO 2	Knorr SB 5000	2004 - 2014	Front & Rear Axle	CVP035 PT
RENAULT				
MIDLUM	Wabco PAN 17	2001 - On	Front & Rear Axle	CVP032 PT



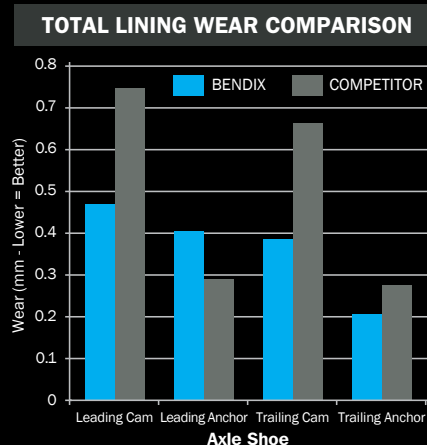
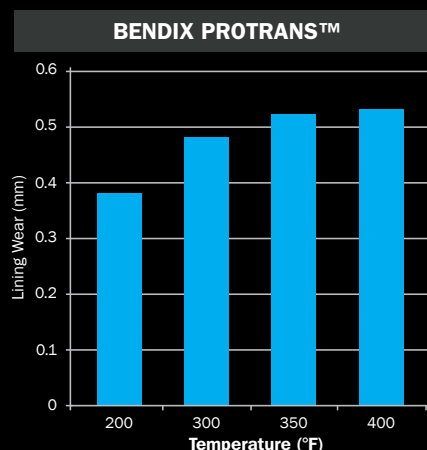
COMMERCIAL VEHICLE BRAKE SHOE KITS



The Bendix Protrans™ range of heavy commercial vehicle brake shoe kits are manufactured to the highest quality standards in a IATF 16949 and QS9000 accredited facility.

The Bendix Protrans™ range features electro hardened journal ends, indented webbing for additional strength and steel rivets. Each shoe is radius ground after riveting / bonding. Bendix has undertaken an exhaustive testing regime to ensure Bendix shoes meets or exceeds the performance characteristics of industry leading OE brake shoes.

The Bendix Protrans™ range includes references to cover popular commercial vehicle foundation brakes and can be found at all leading commercial brake shoe stockist.



FEATURES:	BENEFITS:
Bendix D32 material holds ECE-R90 certification, where Homologated	Proven performance testing
Electro hardened journal ends	Reduced wear at the journal
Indented webbing	Increased strength
Steel rivets	High Shear Strength
Radius ground	High lining to drum ratio, reduces bedding-in time
Hardware kits included	Everything you need in one box

MATERIAL REFERENCE	APPLICATION	FRICTION CLASSIFICATION	MAXIMUM CONTINUOUS WORKING TEMPERATURE
Protrans™	Heavy Duty - Metro and line haul environments, Medium rigid, Coach and Trailer applications. Long wear life at medium to high temperature. Strong braking performance from cold.	FF	500°C

HARDWARE KITS FOR BRAKE SHOES

Outstanding product performance and customer satisfaction require high quality accessory components. Bendix provides you with hardware kits to suit our brake shoe sets, with all the components you need, including the springs, pins, retainers and rollers. The range includes references to cover most popular commercial vehicles.





Bendix Commercial Vehicle brake shoes are specified to deliver superior braking performance

The ECE Regulation 90 (ECE-R90) specifies the design, construction, performance requirements and test protocols for strict European regulations. ECE R90 calls for brake shoes to be tested for braking capabilities, speed sensitivity, cold performance, and may only deviate from the frictional characteristics of their original equipment counterparts by no more than 15%.



VEHICLE APPLICATIONS

MATERIAL NO.	PART NO.	FOUNDATION BRAKE APPLICATION	SHOE DIMENSIONS	FMVSS121	ECE-R90
240010340	BBC/36 PT 95 RIVETED K	BPW BRAKE 95 BC/36/1	420mm X 180mm	✓	✓
240010339	BBC/36 PT NG RIVETED K	BPW 'NEW GEN'	420mm X 180mm	✓	✓
240013622	BBC/100 PT 95 RIVETED K	BPW 'Low Loader'	360mm X 200mm	✓	✓
240013617	B4311 PT Q RIVETED K	EATON DRIVE	16 ½" X 7" (419.1mm x 177.8mm)	✓	
240010331	B4515 PT GPWW RIVETED K	MERITOR DRIVE "P"	16 ½" X 7" (419.1mm x 177.8mm)	✓	✓
240010332	B4515 PT QC RIVETED K	MERITOR DRIVE "Q"	16 ½" X 7" (419.1mm x 177.8mm)	✓	✓
240013618	B4515 PT FRUEHAUF QC RIVETED K	FRUEHAUF / SAF / TMC	16 ½" X 7" (419.1mm x 177.8mm)	✓	✓
240013619	B4515 PT FRUEHAUF WW RIVETED K	FRUEHAUF WW	16 ½" X 7" (419.1mm x 177.8mm)	✓	✓
240016265	B4524 Q PT RIVETED K	MERITOR STEER "Q"	16 ½" X 5" (419.1mm x 127mm)	✓	
240013620	B4707 PT QP RIVETED K	MERITOR DRIVE "Q PLUS"	16 ½" X 7" (419.1mm x 177.8mm)	✓	✓
240013634	B4709 PT ES2 RIVETED K	EATON ESII DRIVE	16 ½" X 7" (419.1mm x 177.8mm)	✓	
240013635	B4711 PT Q RIVETED K	HENDRICKSON INTRAAX	16 ½" X 8 ⅝" (419.1mm x 219.1mm)	✓	
240014534	B4715 PT Q RIVETED K	MERITOR STEER "Q PLUS"	16 ½" X 6" (419.1mm x 152.4mm)	✓	
240013621	B4720 PT Q RIVETED K	MERITOR STEER "Q PLUS"	16 ½" X 5" (419.1mm x 127mm)	✓	
240013633	BBC/36 PT SAF RIVETED K	SAF BB/36/1	420mm X 180mm	✓	✓

Federal Motor Vehicle Safety Standard 121 (FMVSS 121) is a globally recognised, USA standard which establishes performance and equipment requirements to ensure safe braking performance under normal and emergency conditions for trucks, buses and trailers with airbrake systems.

To meet FMVSS 121 the brake system must meet stringent testing requirements covering Brake Retardation, Brake Power, Hot Stop and Recovery. High-mileage brake block/linings with a less than optimal grind radius may exhibit poor performance in this test due to lack of sufficient shoe-to-drum contact. The successful completion of these tests measure overall brake performance and is conducted to the FMVSS 121 certification standard.

TEST PARAMETERS

Test Description:

B8J2-5 FMVSS 121
Dynamometer Schedule

Brake Type

Drum / Air

Size

16.5 x 7.0 inches

Air Chamber

MGM 30

Slack Adjuster

Manual 5.5

Actual Inertia

959.94 slug ft²

Actual Wheel Load

11564.15 lb

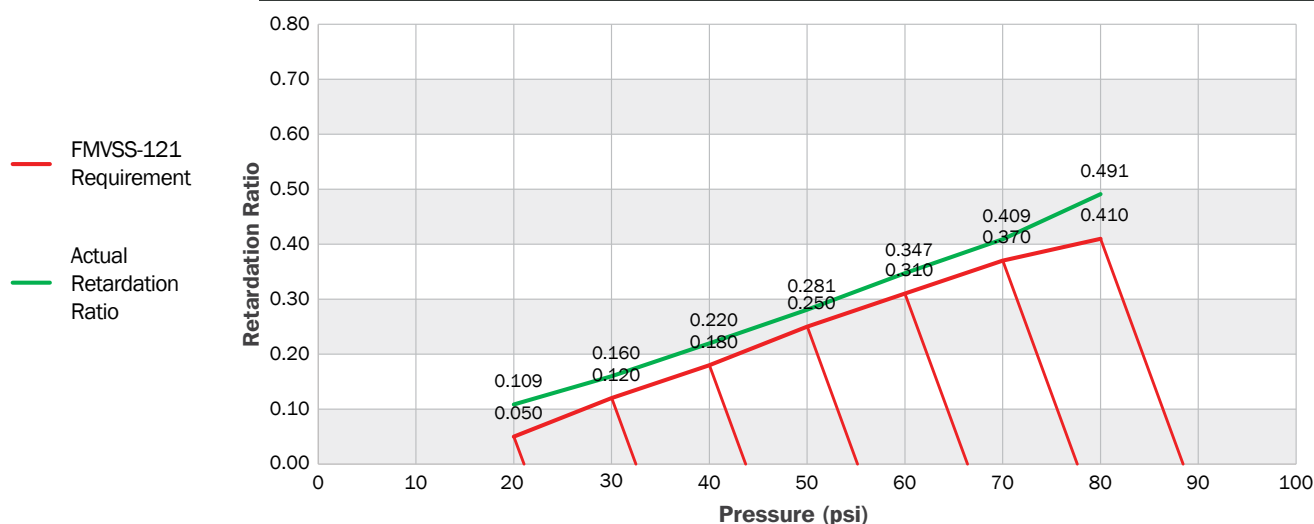
GAWR

23000 lb

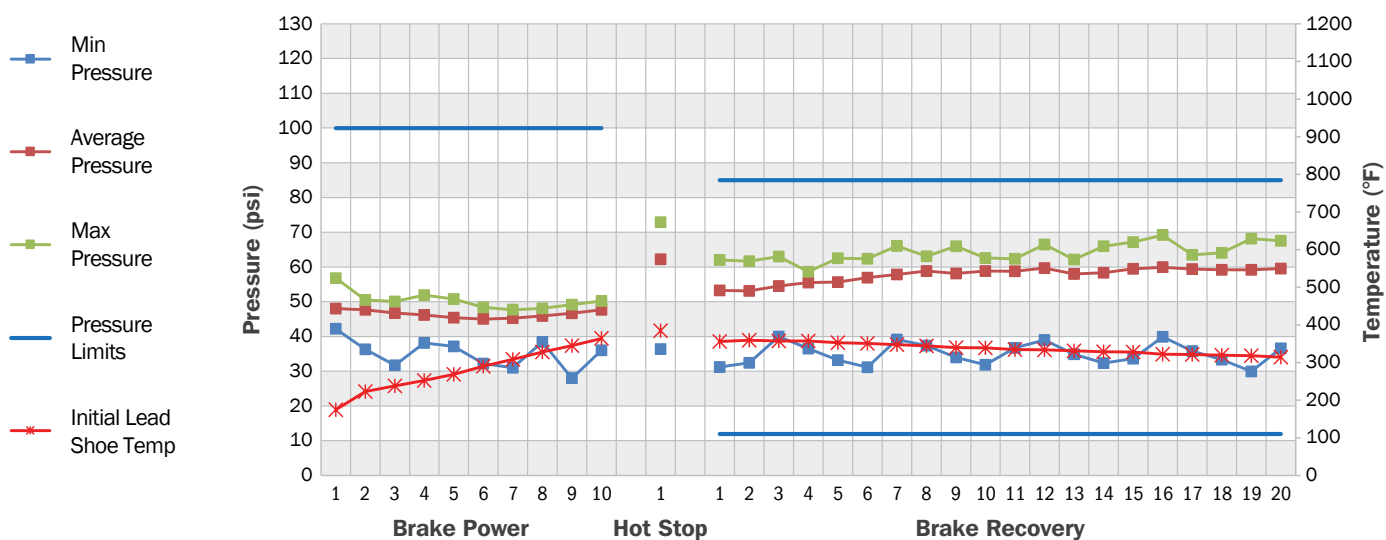
Rolling Radius

19.61 inch

BRAKE RETARDATION



PRESSURE AND TEMPERATURE VS STOP





BENDIX CONSUMABLES RANGE

Also available from Bendix is the Consumables range which is designed to complement Commercial Vehicle products, offering you all you need to complete the perfect brake change.



CERAMASIL BRAKE PARTS LUBRICANT

Specially formulated from pure synthetic base oils and treated with the latest rust, oxidation and anti-wear additives to provide lasting protection against friction, wear and corrosion.

PRODUCT	500mL
Part No.	BBL20
Weight	255g
Barcode	9316068403174



BRAKE CLEANER & PARTS DEGREASER







A full strength cleaner and degreaser that safely and effectively removes brake fluid, grease, oil and other contaminants from brake and parts components. It can dissolve grease and grime without brake disassembly.

PRODUCT	Aerosol	Trade Drum	Pump Spray
Part No.	BBC4	BBC20	BBC1L-PUMP
Weight	400g	20L	1L
Barcode	9316068186053	9316068193686	9316068403655



PREMIUM QUALITY AEROSOLS

Bendix have got it in the can with our new range of super convenient spray cans! The all new range of Bendix spray cans, available at your nearest automotive stockist now.

						
PRODUCT	Degrease	Cleanup	Shine	Multi-Use	Smooth	Silicon
Part No.	BDG4	BBC4	BST4	BMU4	BLG4	BSL3
Weight	400g	400g	400g	400g	400g	330g
Barcode	9316068431931	9316068186053	9316068431948	9316068431955	9316068431962	9316068431979
Quantity per carton	12	12	12	12	12	12

CHOOSE THE RIGHT BRAKE PRODUCT FOR YOUR VEHICLE ONLINE AT BENDIX.COM.AU
Or Freecall the Bendix Brake Advice Centre on **1800 819 666**

FOR MORE INFORMATION ABOUT THESE PRODUCTS

Freecall the Bendix Brake Advice Centre on
1800 819 666 (8am-5pm Monday to Friday EST)
or **+61 3 5327 0211** from overseas.
Visit our website bendix.com.au / bendix.co.nz or
email us, brakeadvicecentre@bendix.com.au

*Put your foot down
with confidence™*

