



**Bendix**



ULTIMATE  
**4WD**

**UPGRADED**

TM



[WWW.BENDIX.COM.AU](http://WWW.BENDIX.COM.AU)



*Put your foot down  
with confidence™*

# SCAN YOUR VEHICLE

WITH THE

## **BENDIX CATALOGUE APP!**



The new **Bendix Catalogue App Scan Feature** allows you to easily identify what type of brakes a vehicle requires simply by scanning a **registration plate**, **VIN number** or Bendix **product barcode** with your phone!

### **THE CATALOGUE APP ALSO FEATURES:**

#### **Fast Catalogue Access**

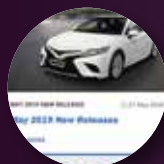
Use the Bendix search engine to quickly find the Bendix part number that fits your job. You can also match an OE/FMSI/WVA or other brake pad part number.

#### **Stockists, News & More!**

Search for any Bendix stockist across Australia and New Zealand or access industry news via media releases, B-m@ils, Newsbrakes, promotions, the Bendix TV channel and more!



**BRAKING NEWS**



**NEW PART No. RELEASES**



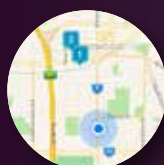
**LATEST PROMOS**



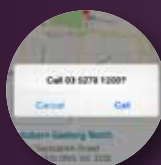
**NOTIFICATIONS**



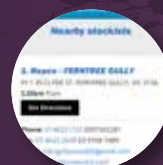
**PRODUCT INFO**



**LOCAL STOCKISTS**



**CONTACT DIRECTLY**



**CHOICE OF STORES & LOCATIONS**

**DOWNLOAD IT FOR FREE TODAY!**  
Free download for Apple and Android devices!



Search Bendix Catalogue



# ULTIMATE 4WD UPGRADED CATALOGUE

**Bendix**



## CONTENTS

ULTIMATE 4WD™ BRAKE UPGRADE KIT	4-5
ULTIMATE 4WD™ DRUM BRAKE UPGRADE KIT	4-5
ULTIMATE 4WD™ BIG BRAKE UPGRADE KIT	6-7
ULTIMATE 4WD™ UPGRADED APPLICATION GUIDE	8-17
ULTIMATE 4WD™ BRAKE BOOSTER UPGRADE	18
ULTIMATE TOW™ ELECTRIC BRAKE CONTROLLER	19

© 2023 FMP Group (Australia) Pty Ltd.  
Bendix is a trademark of Garrett  
Advancing Motion Inc.

This book is subject to copyright. Except as permitted under the Copyright Act 1968 (Cth), no part of this book may be reproduced or transmitted in any form or by any means, or stored in any retrieval system of any nature, without the prior written permission of the copyright owner.

Whilst every endeavour is made to ensure that the information produced is correct, no responsibility for the contents of this supplement is accepted.

Reproduction of any kind whatsoever, in whole or in part, is subject to our express approval.

For this purpose, please contact the Marketing Department of FMP on (03) 9244 7000 or +61 3 5327 0211 from outside Australia.

For more information call us today:

**FMP Group (Australia) Pty Ltd**

Tel: 1800 819 666 (8am-5pm Mon-Fri EST)

+61 3 5327 0211 (overseas)

Fax: 1800 805 336

Email: [orders@bendix.com.au](mailto:orders@bendix.com.au)

[www.bendix.com.au](http://www.bendix.com.au)

# ULTIMATE 4WD™ BRAKE UPGRADE KIT

**Bendix Ultimate 4WD™ Brake Upgrade Kits** are available for popular 4WD wagons and dual cab utes. Featuring advanced brake pads and rotors, braided lines and a host of ancillary items, you can work, explore or tow knowing that you can stop safely with Bendix.

Scan here for more info:



## ULTIMATE 4WD™ BRAKE PADS

FEATURES:	BENEFITS:
<b>Ceramic Material</b>	■ Low Dust, Low Noise, while providing high temperature stability and excellent fade resistance
<b>Mechanical retention system backing plate</b>	■ MRS technology used in commercial vehicle brake pads, for improved pad attachment strength, for heavy duty operating conditions
<b>Designed for Slotted Rotors</b>	■ Works best with slotted rotors, delivers confident stopping in all conditions

## ULTIMATE 4WD™ ROTORS

FEATURES:	BENEFITS:
<b>4WD Metallurgy</b>	■ Disc brake rotor manufactured using SAE J431 material standards. Robust, higher strength and wear resistant for durability in all conditions. Designed to withstand the demanding punishment that your 4WD dishes out
<b>Diamond Tip Slot</b>	■ Allows gasses to escape in heavy duty driving, delivering consistent output ■ Better self cleaning for off road conditions
<b>SwiftFit</b>	■ Protective zinc coating which is ready to fit
<b>Pillar Construction</b>	■ Improved thermal stability

## ULTIMATE 4WD™ BRAKE HOSE

FEATURES:	BENEFITS:
<b>Braided line with protection sleeve</b>	■ Delivers a firm brake pedal, that won't over expand under high pressure
<b>Meets SAE J1401</b>	■ Compliant to international design standards, won't affect warranty
<b>Designed to fit</b>	■ Fits your application without any modification



# ULTIMATE 4WD™ BRAKE DRUM UPGRADE KIT

**Bendix Ultimate 4WD™ Brake Drum Upgrade Kits** are available for popular 4WD wagons and dual cab utes. Featuring advanced brake drums and brake shoe kit and ancillary items.

## ULTIMATE 4WD™ BRAKE DRUMS

FEATURES:	BENEFITS:
<b>High Carbon Metallurgy</b>	■ Increases brake performance & stopping power
<b>SwiftFit</b>	■ Protective zinc coating which is ready to fit
<b>Epoxy Coated Hub</b>	■ With corrosion inhibitors for a great look and will not degrade over time

## ULTIMATE 4WD™ BRAKE SHOE KIT

FEATURES:	BENEFITS:
<b>GG Friction rated</b>	■ Higher friction than OE for better stopping performance
<b>Black painted steel shoe</b>	■ Improved corrosion resistance
<b>Built tough</b>	■ Superior strength and durability





### Front Kit Contents

- 2 × Ultimate 4WD™ Disc Brake Rotors
- 1 × Set of Ultimate 4WD™ Disc Brake Pads
- 1 × Vehicle Set Ultimate 4WD™ Brake Hose
- 1L Heavy Duty Brake Fluid
- 1 × Can Bendix Cleanup
- 1 × Tube Ceramasil™ Brake Parts Lubricant
- Bendix rotor wipes
- 1 × 60L Icebox

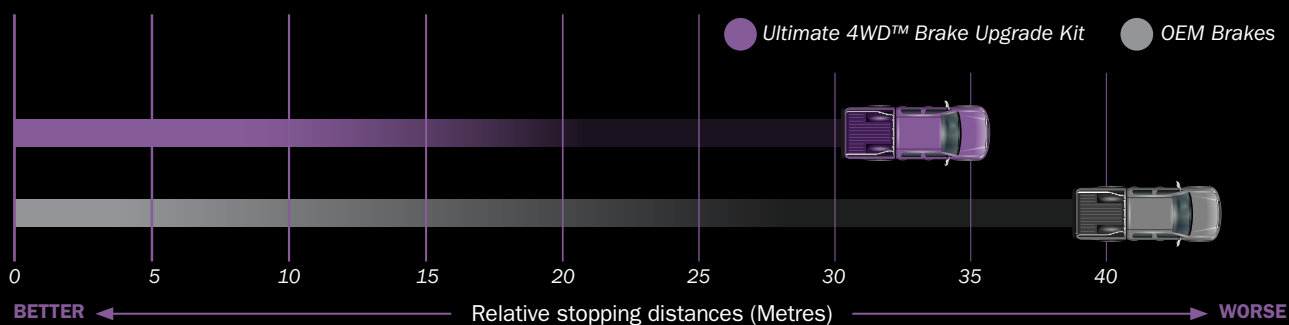


### Rear Kit Contents

- 2 × Ultimate 4WD™ Disc Brake Rotors
- 1 × Set of Ultimate 4WD™ Disc Brake Pads
- 1 × Can Bendix Cleanup
- Bendix rotor wipes
- 1 × HD touring case

NOTE: Images for illustration purposes only. Contents may vary.

## Ultimate 4WD™ Brake Upgrade Kit vs OEM Brakes



Note: Varies per vehicle, load carried and road conditions.



### Kit Contents

- 2 × Ultimate 4WD™ Brake Drums
- 1 × Ultimate 4WD™ Brake Shoe Kit
- 1 × Can Bendix Cleanup

Scan here for more info:



# ULTIMATE 4WD™ BIG BRAKE UPGRADE KIT

**Bendix Ultimate 4WD™ Big Brake Upgrade Kits** are available for selected 4WD wagons and dual cab utes. Featuring advanced brake pads, disc brake rotors, calipers, braided lines and a host of ancillary items, you can work, explore or tow knowing that you can stop safely with Bendix.

Scan here for more info:



## Why do the brake upgrade?

- 4x4 ute's brakes are smaller dimensioned to many of the family cars and SUVs.
- Once additional accessories and load is added, braking performance deteriorates further. It is not uncommon to see 400+ kgs of additional accessories added to the base vehicle (i.e. bull bar, winch, lights, roof-rack, fridges, camping equipment, etc).
- Larger diameter tyres also detract from the vehicles braking performance.



OE Disc Brake Rotor & Caliper



**BENDIX ULTIMATE 4WD™ BIG BRAKE UPGRADE KIT**  
Front Disc Brake Rotor & Caliper

## Drum to Disc conversion: How Does it work?

The Ultimate 4WD™ Big Brake Upgrade Kit (Rear Kit) comes with a full drum to disc conversion kit.

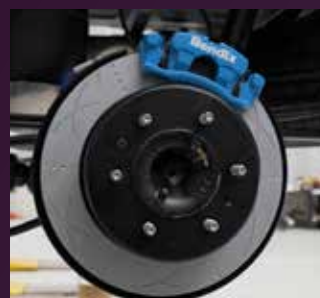
The conversion kit removes all OE drum assembly and replaces it with the brake disc and hydraulic caliper.

The kit also contains a replacement park brake mechanism within the drum that is operated by the OE park brake cable.

The installation of the kit requires the removal of all components from the vehicle axles. This is why the kit comes complete with replacement bearings and seals (ABS rings and collars in some kits).



OE Drum Brake



**BENDIX ULTIMATE 4WD™ BIG BRAKE UPGRADE KIT**  
Rear Disc Brake Rotor & Caliper

## ULTIMATE 4WD™ BRAKE PADS

FEATURES:	BENEFITS:
<b>Ceramic Material</b>	■ Low Dust, Low Noise, while providing high temperature stability and excellent fade resistance
<b>Mechanical retention system backing plate</b>	■ MRS technology used in commercial vehicle brake pads, for improved pad attachment strength, for heavy duty operating conditions
<b>Designed for Slotted Rotors</b>	■ Works best with slotted rotors, delivers confident stopping in all conditions

## ULTIMATE 4WD™ ROTORS

FEATURES:	BENEFITS:
<b>4WD Metallurgy</b>	■ Disc brake rotor manufactured using SAE J431 material standards. Robust, higher strength and wear resistant for durability in all conditions. Designed to withstand the demanding punishment that your 4WD dishes out
<b>Diamond Tip Slot</b>	■ Allows gasses to escape in heavy duty driving, delivering consistent output ■ Better self cleaning for off road conditions
<b>SwiftFit</b>	■ Protective zinc coating which is ready to fit
<b>Pillar Construction</b>	■ Improved thermal stability

## ULTIMATE 4WD™ BRAKE HOSE

FEATURES:	BENEFITS:
<b>Braided line with protection sleeve</b>	■ Delivers a firm brake pedal, that won't over expand under high pressure
<b>Meets SAE J1401</b>	■ Compliant to international design standards, won't affect warranty
<b>Designed to fit</b>	■ Fits your application without any modification





#### Front Kit Contents

- 2 × Ultimate 4WD™ Disc Brake Rotors
- 1 Set × Ultimate 4WD™ Disc Brake Pads
- 2 × Bendix 6-Piston Monoblock Calipers
- Bracket Mounting Kit
- 1 Front Set × Ultimate 4WD™ Brake Hoses
- 1 Litre Heavy Duty Brake Fluid
- ADR Certification
- 1 × Can Bendix Cleanup
- 1 × Tube Ceramasil™ Brake Parts Lubricant
- 1 × 60L Icebox

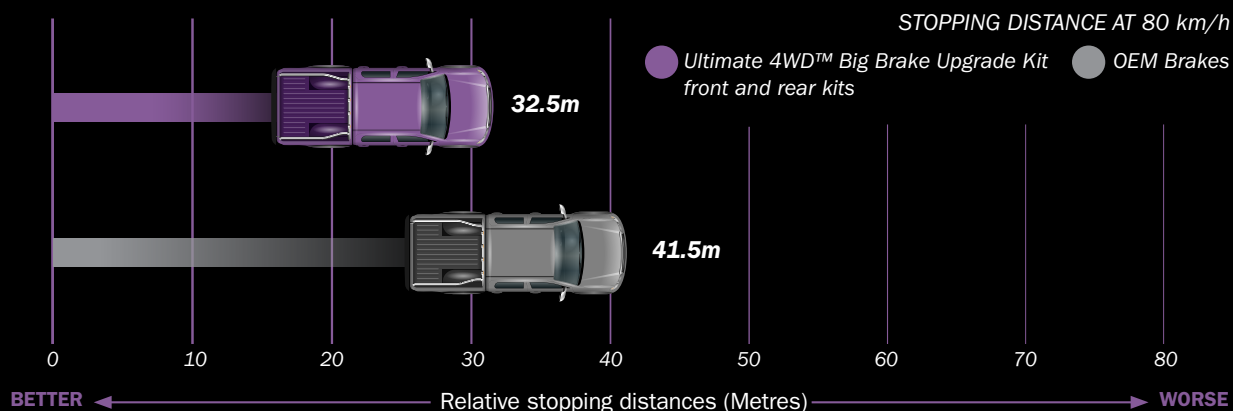


#### Rear Kit Contents

- 2 × Ultimate 4WD™ Disc Brake Rotors
- 1 Set × Ultimate 4WD™ Disc Brake Pads
- 2 × Bendix Calipers
- Bracket Mounting Kit
- Park Brake Mechanism
- 1 Rear Set × Ultimate 4WD™ Brake Hoses
- 1 Litre Heavy Duty Brake Fluid
- ADR Certification
- 1 × Can Bendix Cleanup
- 1 × Tube Ceramasil™ Brake Parts Lubricant
- 1 × 60L Icebox

NOTE: Images for illustration purposes only. Contents may vary.

### Ford Ranger Stopping Distance Data 80–0 km/h



NOTE: Varies per vehicle, load carried and road conditions.

MODEL	YEAR	CHASSIS	SERIES	FITTING POSITION	BRAKE UPGRADE KIT	BRAKE UPGRADE KIT FITMENT NOTES
<b>FORD</b>						
<b>EVEREST</b>	07/2015 - 06/2018	UA UAI	2.0 TDCi 2.0 TDCi 4WD 3.2 TDCi 3.2 TDCi 4WD	Front	U4WD-BBUK200F	6 Pot Caliper, 356mm Rotor For Standard (0") and up to 2" (50mm) lift Requires 18" wheels or larger
					U4WD-BUK77	For standard (0") Lift up to 06/2018 (UA I model)
					U4WD-BUK77+2	For 2" (50mm) Lift up to 06/2018 (UA I model)
				Rear	U4WD-BUK36	Fits all UA Everest
<b>EVEREST</b>	06/2018 - 05/2022	UA UAI	2.0 TDCi 2.0 TDCi 4WD 3.2 TDCi 3.2 TDCi 4WD	Front	U4WD-BBUK200F	6 Pot Caliper, 356mm Rotor For Standard(0") and 2" (50mm) lift Requires 18" wheels or larger
					U4WD-BUK20	For standard (0") Lift from 06/2018 (UAI Model)
					U4WD-BUK20+2	For 2" (50mm) Lift from 06/2018 (UAI model)
				Rear	U4WD-BUK36	Fits all UA Everest
<b>RANGER</b>	11/2006 - 11/2011	PJ PK	2.5 TDDi 4x4 3.0 TDDi 4x4	Front	U4WD-BUK90+2	For Standard and 2" (50mm) lift
				Rear	U4WD-DBUK731	
<b>RANGER</b>	11/2011 - 06/2018	PX, PX II	2.2 TDDi 2.2 TDDi 4x4 2.5 I 3.2 TDDi 3.2 TDDi 4x4	Front	U4WD-BBUK200F	6 Pot Caliper, 356mm Rotor For Standard(0") and 2" (50mm) lift Requires 18" wheels or larger
					U4WD-BUK9	Standard height vehicle.
					U4WD-BUK9+2	Raised height, 50mm (2") lift.
					U4WD-BUK9+4	Raised height, 100 mm (4") lift.
				Rear	U4WD-D2D300R	For Standard (0") lift Requires 15" wheels or larger
					U4WD-D2D300R+2	For 2" (50mm) lift Requires 15" wheels or larger
					U4WD-D2D300R4P	For Standard (0") lift Requires 18" wheels - larger 4-Pot Caliper
					U4WD-D2D300R4P+2	For 2" (50mm) lift Requires 18" wheels - larger 4-Pot Caliper
<b>RANGER</b>	07/2018 - 05/2022	PX III	2.0 TDCi Bi-Turbo 4x4 2.2 TDDi 2.2 TDDi 4x4 3.2 TDDi 3.2 TDDi 4x4	Front	U4WD-BBUK200F	6 Pot Caliper, 356mm Rotor For Standard (0") and 2" (50mm) lift Requires 18" wheels or larger
					U4WD-BUK100+2	356mm Rotor For Standard (0") and 2" (50mm) lift. 302mm Rotor
					U4WD-BUK100+4	Raised height, 100 mm (4") lift. 302mm Rotor
				Rear	U4WD-D2D300R	For Standard (0") lift Requires 15" wheels or larger
					U4WD-D2D300R+2	For 2" (50mm) lift Requires 15" wheels or larger
					U4WD-D2D300R4P	4-Pot Caliper For Standard (0") lift Requires 18" wheels or larger
					U4WD-D2D300R4P+2	4-Pot Caliper. For 2" (50mm) lift Requires 18" wheels or larger
<b>RANGER RAPTOR</b>	07/2018 - 05/2022	PX III	2.0 TDCi Bi-Turbo 4x4	Front	U4WD-BBUK200F	6 Pot Caliper, 356mm Rotor For Standard (0") and 2" (50mm) lift Requires 18" wheels or larger
					U4WD-BUK102+2	For Standard (0") and 2" (50mm) lift. 332mm Rotor
					U4WD-BUK102+4	Raised height, 100 mm (4") lift. 332mm Rotor

□ = Ultimate 4WD Brake Upgrade Kit

□ = Ultimate 4WD Brake Drum Upgrade Kit

■ = Ultimate 4WD Big Brake Upgrade Kit (FRONT)

■ = Ultimate 4WD Big Brake Upgrade Kit (REAR: Drum to Disc Conversion)



MODEL	YEAR	CHASSIS	SERIES	FITTING POSITION	BRAKE UPGRADE KIT	BRAKE UPGRADE KIT FITMENT NOTES
<b>HOLDEN</b>						
<b>COLORADO</b>	06/2012 - 06/2016	RG	2.4 D (U143AG) 2.8 TD (U148CH, U148DH, U148EH) 2.8 TD 4x4 (U148FH) 2.8 TD 4x4 (U148LH, U148MH)	Front	U4WD-BBUK202F	6 Pot Caliper, 356mm Rotor For standard (0") and 2" (50mm) lift Requires 18" wheels or larger
					U4WD-BUK10	Standard height vehicle. Flat (Inboard) Rotor With TSC
					U4WD-BUK10+2	Raised height, 50 mm (2") lift. Flat (Inboard) Rotor With TSC
					U4WD-BUK29	Standard height vehicle. Flat (Inboard) Rotor Without TSC 2012 - 2017
					U4WD-BUK29+2	Raised height, 50 mm (2") lift. Flat (Inboard) Rotor Without TSC 2012 - 2017
				Rear	U4WD-DBUK710	
<b>COLORADO</b>	07/2016 - 10/2020	RG	2.8 TD (U143CK) 2.8 TD (U148CK, U148EK) 2.8 TD 4x4 (U148DK, U148FK, U138FK) 2.8 TD 4x4 (U148MK)	Front	U4WD-BBUK203F	6 Pot Caliper, 356mm Rotor For Production date from 07/2016 For standard (0") and 2" (50mm) lift Requires 18" wheels or larger
					U4WD-BUK31	Standard height vehicle. From MY 06/2016 (Hat type rotor) With VSC
					U4WD-BUK31+2	Raised height, 50 mm (2") lift. From MY 06/2016 (Hat type rotor) With VSC
				Rear	U4WD-DBUK710	
<b>COLORADO 7</b>	06/2012 - 06/2016	RG	2.8 TD 4WD (U156FH, U156MH) 2.8 TD 4x4 (U156FH, U156MH)	Front	U4WD-BBUK202F	6 Pot Caliper, 356mm Rotor For standard (0") and 2" (50mm) lift Requires 18" wheels or larger
					U4WD-BUK107	Standard height vehicle. Flat (Inboard) Rotor With TSC
					U4WD-BUK107+2	Raised height, 50 mm (2") lift. Flat (Inboard) Rotor With TSC
<b>TRAILBLAZER</b>	07/2016 - 10/2020	RG	2.8 TDi 4x4	Front	U4WD-BBUK203F	6 Pot Caliper, 356mm Rotor For Production date from 07/2016 For standard (0") and 2" (50mm) lift Requires 18" wheels or larger
					U4WD-BUK21	Standard lift (0") From 06/2016 For Hat type rotor and vehicles equipped with Active Stabiliser Control.
					U4WD-BUK21+2	2" (50mm) lift From 06/2016 For Hat type rotor and vehicles equipped with Active Stabilizer Control.

 = Ultimate 4WD Brake Upgrade Kit

 = Ultimate 4WD Brake Drum Upgrade Kit

 = Ultimate 4WD Big Brake Upgrade Kit (FRONT)

 = Ultimate 4WD Big Brake Upgrade Kit (REAR: Drum to Disc Conversion)

MODEL	YEAR	CHASSIS	SERIES	FITTING POSITION	BRAKE UPGRADE KIT	BRAKE UPGRADE KIT FITMENT NOTES
ISUZU						
D-MAX	06/2012 - 05/2020	TFR TFS	3.0 CRDi 3.0 CRDi (TFR85J) 3.0 CRDi 4x4 3.0 CRDi 4x4 (TFS85J)	Front	U4WD-BBUK202F	6 Pot Caliper, 356mm Rotor For standard (0") and 2" (50mm) lift Requires 18" wheels or larger
					U4WD-BUK10	Standard height vehicle. Flat (Inboard) Rotor With TSC
					U4WD-BUK10+2	Raised height, 50 mm (2") lift. Flat (Inboard) Rotor With TSC
					U4WD-BUK29	Standard height vehicle. Flat (Inboard) Rotor Without TSC 2012 - 2017
					U4WD-BUK29+2	Raised height, 50 mm (2") lift. Flat (Inboard) Rotor Without TSC 2012 - 2017
				Rear	U4WD-D2D302R	6 Pot Caliper, 356mm Rotor For standard (0") lift with VSC option Requires 15" wheels or larger"
					U4WD-D2D302R+2	For 2" (50mm) lift with VSC option Requires 15"" wheels or larger
					U4WD-D2D308R	For standard (0") lift without VSC option Requires 15" wheels or larger
					U4WD-D2D308R+2	For 2" (50mm) lift without VSC option Requires 15" wheels or larger
					U4WD-DBUK710	
D-MAX	06/2020 - on	TFR TFS	3.0 DDI 3.0 DDI 4x4 3.0 DDI Rear-Wheel Drive (TFR40J)	Front	U4WD-BBUK204F	6 Pot Caliper, 356mm Rotor For standard (0") and 2" (50mm) lift Requires 18" wheels or larger
				Rear	U4WD-D2D302R	For standard (0") lift with VSC option Requires 15" wheels or larger
					U4WD-D2D302R+2	For 2" (50mm) lift with VSC option Requires 15" wheels or larger
					U4WD-DBUK710	
					MU-X	11/2013 - 05/2021
U4WD-BUK94	For Standard (0") lift					
U4WD-BUK94+2	For 2" (50mm) lift					
JEEP						
GRAND CHEROKEE	10/2010 - 12/2018	WK WK2	3.0 CRD V6 4x4 3.6 V6 4x4 3.6 VVT 3.6 VVT 4x4 5.7 V8 4x4 6.2 i V8 4x4 6.4 SRT8 4x4	Front	U4WD-BUK25	Standard (0") Lift For vehicles with 330mm brake rotor (17" wheels)
					U4WD-BUK25+2	For 2" (50mm) Lift For vehicles with 330mm brake rotor (17" wheels)
					U4WD-BUK49	Standard (0") Lift For vehicles with 350mm brake rotor (18" wheels)
					U4WD-BUK49+2	For 2" (50mm)) Lift For vehicles with 350mm brake rotor (18" wheels)
				Rear	U4WD-BUK53	For vehicles with 330mm vented rear rotor (17" wheels)
					U4WD-BUK76	For vehicles with 350mm vented rear rotor (18" wheels)

 = Ultimate 4WD Brake Upgrade Kit

 = Ultimate 4WD Brake Drum Upgrade Kit

 = Ultimate 4WD Big Brake Upgrade Kit (FRONT)

 = Ultimate 4WD Big Brake Upgrade Kit (REAR: Drum to Disc Conversion)



MODEL	YEAR	CHASSIS	SERIES	FITTING POSITION	BRAKE UPGRADE KIT	BRAKE UPGRADE KIT FITMENT NOTES
-------	------	---------	--------	------------------	-------------------	---------------------------------

## MAZDA

BT-50	11/2011 - 06/2020	B22 B32 UP UR	3.2 MZ-CD (UPOYF1, UROYF1) 3.2 MZ-CD 4WD (UPOYF1, UROYF1)	Front	U4WD-BBUK200F	6 Pot Caliper, 356mm Rotor For standard (0") and 2" (50mm) lift Requires 18" wheels or larger
					U4WD-BUK9	Standard height vehicle.
					U4WD-BUK9+2	Raised height, 50mm (2") lift.
					U4WD-BUK9+4	Raised height, 100 mm (4") lift.
				Rear	U4WD-D2D300R	For Standard (0") lift Requires 15" wheels or larger
					U4WD-D2D300R+2	For 2" (50mm) lift Requires 15" wheels or larger
					U4WD-D2D300R4P	4-Pot Caliper. For Standard (0") lift Requires 18" wheels or larger
					U4WD-D2D300R4P+2	4-Pot Caliper. For 2" (50mm) lift Requires 18" wheels or larger.

## MITSUBISHI

PAJERO	2006 - 2016	NS NT NW	2.5 TD 3.0 V6 3.5 V6	Front	U4WD-BUK81	Standard height and up to 2" (50mm) lift
				Rear	U4WD-BUK82	Suits All NS, NT, NW Pajero
PAJERO	2006 - 2016	NS NT NW	3.2 TD 3.8 V6	Front	U4WD-BUK109	Standard height and up to 2" (50mm) lift
				Rear	U4WD-BUK82	Suits All NS, NT, NW Pajero
PAJERO SPORT	08/2015 - on	QE QF	2.4 DI-D 4x4 (KS1W)	Front	U4WD-BUK78	For Standard (0") lift
					U4WD-BUK78+2	For 2" (50mm) lift
TRITON	11/2005 - 12/2015	KA4T ML MN	2.4 (KA5T) 2.4 LPG (KA5T) 2.5 DI-D (KA4T) 2.5 DI-D 4WD (KB4T) 2.5 DiD (KA4T) 3.2 DI-D 4WD (KB8T) 3.5 (KA9T) 3.5 4WD (KB9T) 3.5 i 4WD (KB9T)	Front	U4WD-BUK11	Standard Height Suspension Vehicles with 295mm Brake Disc
					U4WD-BUK11+2	Raised Height Suspension, 50mm (2") lift. Vehicles with 295mm Brake Disc"
				Rear	U4WD-DBUK711	
TRITON	11/2014 - 06/2020	MQ	2.4 (KK4T) 2.4 D (KK1T) 2.4 D 4WD (KL1T) 2.4 DI-D (KK1T) 2.4 DI-D 4WD (KJOT) 2.4 DI-D 4WD (KL1T) 2.4 i (KK4T)	Front	U4WD-BUK11	Vehicles with 295mm Brake Disc Kit suitable for Standard Height Suspension
					U4WD-BUK11+2	Vehicles with 295mm Brake Disc Kit Suitable for Raised Height Suspension, 50mm (2") lift.
				Rear	U4WD-D2D304R	For Standard (0") lift Requires 15" wheels and larger
					U4WD-D2D304R+2	For 2" (50mm) lift Requires 15" wheels and larger
					U4WD-DBUK711	
TRITON	07/2020 - On	MR	2.4 (KK4T) 2.4 D (KK1T) 2.4 D 4WD (KL1T) 2.4 DI-D (KK1T) 2.4 DI-D 4WD (KJOT) 2.4 DI-D 4WD (KL1T) 2.4 i (KK4T)	Front	U4WD-BUK88	Vehicles with 320mm Brake Disc Kit suitable for Standard Height Suspension
					U4WD-BUK88+2	Vehicles with 320mm Brake Disc Kit Suitable for Raised Height Suspension, 50mm (2") lift.
				Rear	U4WD-D2D304R	For Standard (0") lift Requires 15" wheels and larger
					U4WD-D2D304R+2	For 2" (50mm) lift Requires 15" wheels and larger
					U4WD-DBUK711	

 = Ultimate 4WD Brake Upgrade Kit

 = Ultimate 4WD Brake Drum Upgrade Kit

 = Ultimate 4WD Big Brake Upgrade Kit (FRONT)

 = Ultimate 4WD Big Brake Upgrade Kit (REAR: Drum to Disc Conversion)

MODEL	YEAR	CHASSIS	SERIES	FITTING POSITION	BRAKE UPGRADE KIT	BRAKE UPGRADE KIT FITMENT NOTES
<b>NISSAN</b>						
NAVARA	03/1997 - 02/2015	D22	2.4 i 4WD 2.5 Di 4WD 3.0 TD 4WD	Rear	U4WD-DBUK785	
NAVARA	12/2005 - 10/2015	D40	2.5 dCi 2.5 dCi 4WD 2.5 dCi 4WD (D40T) 4.0 4.0 4WD	Front	U4WD-BUK52	For standard(0") lift For Vehicles built in Spain
					U4WD-BUK52+2	For 2" (50mm) lift For Vehicles built in Spain
NAVARA	01/2011 - 10/2015	D40	3.0 dCi 4WD	Front	U4WD-BUK22	For standard (0") lift
					U4WD-BUK22+2	For 2" (50mm) lift
NAVARA	01/2015 - on	D23 D23 D23T	2.3 DDTi 2.3 dCi 2.3 dCi (D231) 2.3 dCi 4x4 2.3 dCi 4x4 (D231) 2.5	Front	U4WD-BUK12	Standard height 0" Dual Cab 2WD Middle Narrow Grade Dual Cab 4WD Smooth bed Narrow Middle narrow grade Dual Cab High a Grade Single Cab M9T(2.3L) Engine Dual Cab No Bed King single Cab
					U4WD-BUK12+2	Raised height, 50 mm (2") suspension lift. Dual Cab 2WD Middle Narrow Grade Dual Cab 4WD Smooth bed Narrow Middle narrow grade Dual Cab High a Grade Single Cab M9T(2.3L) Engine Dual Cab No Bed King single Cab
				Rear	U4WD-D2D305R	For Standard (0") lift Requires 15" wheels and larger
					U4WD-D2D305R+2	For 2" (50mm) lift Requires 15" wheels and larger
PATHFINDER	07/2005 - 12/2013	R51	2.5 dCi 4WD 3.0 dCi 4.0 4WD	Front	U4WD-BUK66	For Standard(0") and 2" (50mm) lift 296mm Brake Rotor (16" wheels)
					U4WD-BUK101	For Standard(0") and 2" (50mm) lift 320mm Brake Rotor (17" wheels)
PATROL	02/1999 - 12/2006	GU TY61 Y61	2.8 TD 4.2 D 4.2 TD 4.5	Front	U4WD-BUK18	Standard height, Non ABS
					U4WD-BUK18+2	Raised height, 50 mm (2") Non ABS
					U4WD-BUK18+4	Raised height, 100 mm (4") Non ABS
					U4WD-BUK62+2	For Standard (0") lift and 2" (50mm) lift For vehicles with ABS
					U4WD-BUK62+4	For 4" (100mm) lift For vehicles with ABS
				Rear	U4WD-BUK40	Rear Y61 - Not 4.8
PATROL	3/2007 - 12/2016	GU TY61 Y61	3.0 D 4x4 (TY61)	Front	U4WD-BUK18+2	Raised height, 50 mm (2") Non ABS From 12/2009
					U4WD-BUK18+4	Raised height, 100 mm (4") Non ABS From 12/2009
					U4WD-BUK63+2	For Standard (0") lift and 2" (50mm) lift For vehicles with ABS up to 12/2009
					U4WD-BUK63+4	For 4" (100mm) lift For vehicles with ABS up to 12/2009
				Rear	U4WD-BUK40	For Brake rotor diameter = 315mm
PATROL	12/2012 - on	Y62	5.6	Front	U4WD-BUK23	For vehicles with standard and 2" lift suspension.
				Rear	U4WD-BUK48	

 = Ultimate 4WD Brake Upgrade Kit

 = Ultimate 4WD Brake Drum Upgrade Kit

 = Ultimate 4WD Big Brake Upgrade Kit (FRONT)

 = Ultimate 4WD Big Brake Upgrade Kit (REAR: Drum to Disc Conversion)



MODEL	YEAR	CHASSIS	SERIES	FITTING POSITION	BRAKE UPGRADE KIT	BRAKE UPGRADE KIT FITMENT NOTES
<b>TOYOTA</b>						
<b>FJ CRUISER</b>	12/2010 - 07/2013	GSJ15	4.0 4WD (GSJ15_)	Front	U4WD-BUK80	For Standard (0") Lift For production date to 07/2013
					U4WD-BUK80+2	For 2" (50mm) Lift For production date to 07/2013
				Rear	U4WD-BUK37	Suits all FJ Cruiser
<b>FJ CRUISER</b>	07/2013 - 01/2018	GSJ15	4.0 4WD (GSJ15_)	Front	U4WD-BUK24	For Standard (0") Lift For production date from 07/2013
					U4WD-BUK24+2	For 2" (50mm) Lift For production date from 07/2013
				Rear	U4WD-BUK37	Suits all FJ Cruiser
<b>FORTUNER</b>	07/2015 - On	GUN156R	2.8 D-4D (GUN156R)	Front	U4WD-BUK71	For standard (0" ) lift
					U4WD-BUK71+2	For 2" (50mm) lift
<b>HILUX</b>	12/1999 - 04/2005	KZN165	3.0 TD 4WD (KZN165)	Front	U4WD-BUK83+2	Standard height and 2" lift vehicle suspension.
				Rear	U4WD-DBUK730	Drum Upgrade kit
<b>HILUX</b>	02/2005 - 06/2011	KUN26 GGN25	3.0 D-4D 4WD (KUN26)	Front	U4WD-BBUK201F	6 Pot Caliper, 356mm Rotor For standard (0") and 2" (50mm) lift Requires 18" wheels or larger
					U4WD-BUK1	Standard height vehicle. 319mm Rotor With ABS and VSC. 02/2005 - 06/2011
					U4WD-BUK1+2	Raised height, 50mm (2") lift. 319mm Rotor With ABS and VSC. 02/2005 - 06/2011
					U4WD-BUK1+4	Raised height, 100 mm (4") lift. 319mm Rotor With ABS and VSC. 02/2005 - 06/2011
					U4WD-BUK6	Standard height and up to 2" (50mm) lift 297mm Rotor With ABS No VSC 08/2005 - 06/2011
					U4WD-BUK6+4	Raised height up to 4" (100 mm) 297mm Rotor With ABS No VSC 08/2005 - 06/2011
				Rear	U4WD-D2D301R	For Standard (0") lift Single row wheel bearings Requires 15" wheels and larger
					U4WD-D2D301R+2	For 2" (50mm) lift Single row wheel bearings Requires 15" wheels and larger
					U4WD-DBUK701	Drum Upgrade kit
<b>HILUX</b>	07/2011 - 09/2015	KUN26 GGN25	3.0 D-4D 4WD (KUN26) 4.0 4WD (GGN25)	Front	U4WD-BBUK201F	6 Pot Caliper, 356mm Rotor For standard (0") and 2" (50mm) lift Requires 18" wheels or larger
					U4WD-BUK4	For standard (0") lift, from 2011
					U4WD-BUK4+2	For 2" (50mm) lift, from 2011
					U4WD-BUK4+4	For 4" (100mm) lift, from 2011
					U4WD-BUK7	Standard height and 2" lift 297mm Rotor With ABS No VSC 07/2011 - 04/2015
				Rear	U4WD-D2D301R	For Standard (0") lift Double row wheel bearings Requires 15" wheels and larger
					U4WD-D2D301R+2	For 2" (50mm) lift Double row wheel bearings Requires 15" wheels and larger
					U4WD-DBUK701	Drum Upgrade kit

 = Ultimate 4WD Brake Upgrade Kit

 = Ultimate 4WD Brake Drum Upgrade Kit

 = Ultimate 4WD Big Brake Upgrade Kit (FRONT)

 = Ultimate 4WD Big Brake Upgrade Kit (REAR: Drum to Disc Conversion)

MODEL	YEAR	CHASSIS	SERIES	FITTING POSITION	BRAKE UPGRADE KIT	BRAKE UPGRADE KIT FITMENT NOTES
<b>TOYOTA</b> <i>continued</i>						
<b>HILUX</b>	07/2015 - 07/2017	GGN120	4.0 (GGN120_, GGN135_)	Front	U4WD-BBUK201F	6 Pot Caliper, 356mm Rotor For standard (0") and 2" (50mm) lift Requires 18" wheels or larger
					U4WD-BUK8	Standard height vehicle 297mm Rotor. Does not suit GUN135
					U4WD-BUK8+2	Raised height, 50mm (2") lift. 297mm Rotor Does not suit GUN135
<b>HILUX</b>	05/2015 - on	GGN125 GUN125 GUN126	2.4 D 4WD (GUN125_) 2.8 D 4WD (GUN126) 2.8 D 4WD (GUN126_) 4.0 4WD (GGN125, GGN135)	Front	U4WD-BBUK201F	For standard (0") and 2" (50mm) lift Requires 18" wheels or larger
					U4WD-BUK2	Standard height vehicle. 319mm Rotor
					U4WD-BUK2+2	Raised height, 50 mm (2") lift. 319mm Rotor
					U4WD-BUK2	For Standard 0" lift vehicles.
					U4WD-BUK2+2	For 2" (50mm) lift.
				Rear	U4WD-D2D301R	For Standard (0") lift Double row wheel bearings Requires 15" wheels and larger
					U4WD-D2D301R+2	For 2" (50mm) lift Double row wheel bearings Requires 15" wheels and larger
					U4WD-DBUK701	Drum Upgrade kit
<b>HILUX</b>	05/2015 - on	GUN122 GUN123 GUN135	2.4 D (GUN112_, GUN122_, GUN135_, GUN120_)	Front	U4WD-BBUK201F	6 Pot Caliper, 356mm Rotor For standard (0") and 2" (50mm) lift Requires 18" wheels or larger
					U4WD-BUK2	For GUN135 models with Standard (0") lift vehicles.
					U4WD-BUK2+2	For GUN135 models with 2" (50mm) lift.
					U4WD-BUK8	Standard height vehicle 297mm Rotor. Does not suit GUN135
<b>HILUX</b>	05/2015 - on	GUN123 TGN121	2.7 (TGN111_, TGN121_, TGN136_) 2.8 D (GUN123_, GUN123) 2.8 D (GUN123_, GUN136_, GUN123)	Front	U4WD-BBUK201F	For standard (0") and 2" (50mm) lift Requires 18" wheels or larger
				Rear	U4WD-D2D301R	For standard (0") lift Requires 15" wheels or larger
					U4WD-D2D301R+2	For 2" (50mm) lift Requires 15" wheels or larger
<b>LAND CRUISER</b>	08/1999 - 01/2007	FZJ78R FZJ79R HDJ78R HDJ79RHZJ70RV HZJ75RP HZJ75RV HZJ78R HZJ79R	4.2 D (HZJ70RV, HZJ75RV, HZJ78R) 4.2 D 4x4 (HZJ7 V, HZJ75RP, HZJ79R) 4.5 MPFI 4x4 (FZJ78, FZJ70, FZJ78R, FZJ79) 4.2 TD 24V 4x4 (HDJ78, HDJ78R) 4.2 TD 24V 4x4 (HDJ79R) 4.5 MPFI 4x4 (FZJ79, FZJ79R)	Front	U4WD-BBUK216F	6 Pot Caliper, 340mm Rotor For Standard (0") Lift, Manufactured from 08/1999 Requires 17" wheels or larger
					U4WD-BBUK216F+2	6 Pot Caliper, 340mm Rotor For 2" (50mm) Lift Manufactured from 08/1999 Requires 17" wheels or larger
					U4WD-BBUK216F+4	For 4" (100mm) Lift Manufactured from 08/1999 Requires 17" wheels or larger
					U4WD-BUK16	For Standard (0") Lift, Manufactured from 08/1999
					U4WD-BUK16+2	For 2" (50mm) Lift Manufactured from 08/1999
					U4WD-BUK16+4	For 4" (100mm) Lift Manufactured from 08/1999
				Rear	U4WD-BBUK334	For Standard (0") Lift, Manufactured from 08/1999 Requires 17" wheels or larger
					U4WD-BUK34	Suits all LC VDJ76/78/79 Series

 = Ultimate 4WD Brake Upgrade Kit

 = Ultimate 4WD Brake Drum Upgrade Kit

 = Ultimate 4WD Big Brake Upgrade Kit (FRONT)

 = Ultimate 4WD Big Brake Upgrade Kit (REAR: Drum to Disc Conversion)

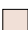


MODEL	YEAR	CHASSIS	SERIES	FITTING POSITION	BRAKE UPGRADE KIT	BRAKE UPGRADE KIT FITMENT NOTES
<b>TOYOTA</b> <i>continued</i>						
<b>LAND CRUISER</b>	01/2007 - 08/2014	VDJ76R VDJ78R VDJ79R	4.5 TD 24V 4x4 (VDJ76, VDJ78, VDJ76R, VDJ78R) 4.5 TD 24V 4x4 (VDJ79, VDJ79R)	Front	U4WD-BBUK216F	6 Pot Caliper, 340mm Rotor Standard height, (0 mm lift). Suits to 8/2014. No ABS Requires 17" wheels or larger
					U4WD-BBUK216F+2	6 Pot Caliper, 340mm Rotor Raised height, 50 mm (2") lift. Suits to 8/2014. No ABS Requires 17" wheels or larger
					U4WD-BBUK216F+4	6 Pot Caliper, 340mm Rotor Raised height, 100 mm (4") lift. Suits to 8/2014 No ABS Requires 17" wheels or larger"
					U4WD-BUK16	Standard height (0") lift. Suits to 8/2014 No ABS
					U4WD-BUK16+2	Raised height, 50 mm (2") lift. Suits to 8/2014 No ABS
					U4WD-BUK16+4	Raised height, 100 mm (4") lift. Suits to 8/2014 No ABS
				Rear	U4WD-BBUK334	4Pot Caliper, 345mm Rotor For Standard (0") Lift, Requires 17" wheels or larger
					U4WD-BUK34	Suits all LC VDJ76/78/79 Series
<b>LAND CRUISER</b>	09/2014 - 08/2016	VDJ76R VDJ78R VDJ79R	4.5 TD 24V 4x4 (VDJ76, VDJ78, VDJ76R, VDJ78R) 4.5 TD 24V 4x4 (VDJ79, VDJ79R)	Front	U4WD-BBUK243	6 Pot Caliper, 340mm Rotor Standard height vehicle Suits to - 08/2016 With 3 Channel ABS (w/o VSC)
					U4WD-BBUK243+2	6 Pot Caliper, 340mm Rotor 2" Lift Suits to - 08/2016 With 3 Channel ABS (w/o VSC)
					U4WD-BBUK243+4	6 Pot Caliper, 340mm Rotor 4" Lift Suits to - 08/2016 With 3 Channel ABS (w/o VSC)
					U4WD-BUK43	Standard height vehicle Suits to - 08/2016 With 3 Channel ABS (w/o VSC)"
					U4WD-BUK43+2	"2" Lift Suits to - 08/2016 With 3 Channel ABS (w/o VSC)
					U4WD-BUK43+4	4" Lift Suits to - 08/2016 With 3 Channel ABS (w/o VSC)
				Rear	U4WD-BBUK334	4Pot Caliper, 345mm Rotor For Standard (0") Lift, Requires 17" wheels or larger
					U4WD-BUK34	Suits all LC VDJ76/78/79 Series

 = Ultimate 4WD Brake Upgrade Kit

 = Ultimate 4WD Brake Drum Upgrade Kit

 = Ultimate 4WD Big Brake Upgrade Kit (FRONT)

 = Ultimate 4WD Big Brake Upgrade Kit (REAR: Drum to Disc Conversion)

MODEL	YEAR	CHASSIS	SERIES	FITTING POSITION	BRAKE UPGRADE KIT	BRAKE UPGRADE KIT FITMENT NOTES
<b>TOYOTA</b> <i>continued</i>						
<b>LAND CRUISER</b>	08/2016 - on	VDJ76R VDJ78R VDJ79R	4.5 TD 24V 4x4 (VDJ76, VDJ78, VDJ76R, VDJ78R) 4.5 TD 24V 4x4 (VDJ79, VDJ79R)	Front	U4WD-BBUK245	6 Pot Caliper, 340mm Rotor Standard ride height Suits 08/2016 - on With 4 Channel ABS (with VSC)"
					U4WD-BBUK245+2	6 Pot Caliper, 340mm Rotor 2" lift Suits 08/2016 - on With 4 Channel ABS (with VSC)
					U4WD-BBUK245+4	6 Pot Caliper, 340mm Rotor 4" lift Suits 08/2016 - on With 4 Channel ABS (with VSC)
					U4WD-BUK45	Standard ride height Suits 08/2016 - on With 4 Channel ABS (with VSC)
					U4WD-BUK45+2	2" lift Suits 08/2016 - on With 4 Channel ABS (with VSC)
					U4WD-BUK45+4	4" lift Suits 08/2016 - on With 4 Channel ABS (with VSC)
				Rear	U4WD-BBUK334	4 Pot Caliper, 345mm Rotor For Standard (0") Lift, Requires 17" wheels or larger
					U4WD-BUK34	Suits all LC VDJ76/78/79 Series
<b>LAND CRUISER</b>	01/1990 - 07/1992	FJ80 HDJ80 HZJ80	4.0 (FJ80) 4.0 EFI (FJ80) 4.2 D (HZJ80) 4.2 TD (HDJ80)	Front	U4WD-BUK98+2	For Standard and 2" (50mm) lift With ABS
					U4WD-BUK98+4	For 4" (100mm) lift With ABS
					U4WD-BUK96+2	For Standard and 2" (50mm) lift No ABS
					U4WD-BUK96+4	For 4" (100mm) lift No ABS
				Rear	U4WD-BUK99	Suits all 80 Series
<b>LAND CRUISER</b>	08/1992 - 01/1995	FZJ80 HDJ80 HZJ80	4.2 D (HZJ80) 4.2 TD (HDJ80) 4.5 i (FZJ80)	Front	U4WD-BUK104+2	For Standard and 2" (50mm) lift With ABS
					U4WD-BUK104+4	For 4" (100mm) lift With ABS
					U4WD-BUK103+2	For Standard and 2" (50mm) lift No ABS
					U4WD-BUK103+4	For 4" (100mm) lift No ABS
				Rear	U4WD-BUK99	Suits all 80 Series
<b>LAND CRUISER</b>	01/1995 - 12/1997	FZJ80 HDJ80 HZJ80	4.2 D (HZJ80) 4.2 TD (HDJ80) 4.5 i (FZJ80)	Front	U4WD-BUK97+2	For Standard and 2" (50mm) lift With ABS
					U4WD-BUK97+4	For 4" (100mm) lift With ABS
					U4WD-BUK93+2	For Standard and 2" (50mm) lift No ABS
					U4WD-BUK93+4	For 4" (100mm) lift No ABS
				Rear	U4WD-BUK99	Suits all 80 Series
<b>LAND CRUISER</b>	03/1998 - 07/2002	FZJ105	4.5 i (FZJ105)	Front	U4WD-BUK75	For standard (0") lift without ABS
					U4WD-BUK75+2	For 2" (50mm) lift without ABS
					U4WD-BUK75+4	For 4" (100mm) lift without ABS
					U4WD-BUK79	For standard (0") lift with ABS
					U4WD-BUK79+2	For 2" (50mm) lift with ABS
					U4WD-BUK79+4	For 4" (100mm) lift with ABS
				Rear	U4WD-BUK74	For standard (0") lift with ABS
<b>LAND CRUISER</b>	01/1998 - 08/2007	HDJ100 HDJ101 UZJ100	4.2 TD (HDJ100_, HDJ100) 4.2 TD IMPORT (HDJ101_) 4.7 i 4WD (UZJ100_, UZJ100)	Front	U4WD-BUK30	For Standard (0") Lift With VSC
					U4WD-BUK30+2	For 2" (50mm) Lift With VSC
					U4WD-BUK69	For standard 0" lift without VSC
					U4WD-BUK69+2	For standard 2" (50mm) lift without VSC
				Rear	U4WD-BUK70	

 = Ultimate 4WD Brake Upgrade Kit

 = Ultimate 4WD Brake Drum Upgrade Kit

 = Ultimate 4WD Big Brake Upgrade Kit (FRONT)

 = Ultimate 4WD Big Brake Upgrade Kit (REAR: Drum to Disc Conversion)

MODEL	YEAR	CHASSIS	SERIES	FITTING POSITION	BRAKE UPGRADE KIT	BRAKE UPGRADE KIT FITMENT NOTES
-------	------	---------	--------	------------------	-------------------	---------------------------------

## TOYOTA *continued*

LAND CRUISER	03/1998 - 08/2007	HZJ105	4.2 D (HZJ105)	Front	U4WD-BUK75	For standard (0") lift without ABS
					U4WD-BUK75+2	For 2" (50mm) lift without ABS
					U4WD-BUK75+4	For 4" (100mm) lift without ABS
					U4WD-BUK79	For standard (0") lift with ABS
					U4WD-BUK79+2	For 2" (50mm) lift with ABS
					U4WD-BUK79+4	For 4" (100mm) lift with ABS
LAND CRUISER	08/2007 - 01/2012	UJ200 VDJ200	4.7 V8 (UJ200) 4.5 D-4D (VDJ200)	Front	U4WD-BUK15 U4WD-BUK15+2	For Standard (0") lift with 340mm Rotor. For 2" (50mm) lift with 340mm Rotor
				Rear	U4WD-BUK35	Suits all LC 200 Series
LAND CRUISER	02/2012 - 07/2015	UJ200 VDJ200	4.7 V8 (UJ200) 4.5 D-4D (VDJ200)	Front	U4WD-BUK61	For Standard (0") lift 340mm Rotor
					U4WD-BUK61+2	For 2" (50mm) lift 340mm Rotor
				Rear	U4WD-BUK35	Suits all LC 200 Series
LAND CRUISER	08/2015 - 08/2019	URJ202 VDJ200	4.6 V8 (URJ202) 4.5 D-4D (VDJ200)	Front	U4WD-BUK17	For Standard (0") lift VX and Sahara 354mm Rotor
					U4WD-BUK17+2	For 2" (50mm) lift VX and Sahara 354mm Rotor
					U4WD-BUK61	For Standard (0") lift GX, GXL 340mm Rotor
					U4WD-BUK61+2	For 2" (50mm) lift GX, GXL 340mm Rotor
				Rear	U4WD-BUK35	Suits all LC 200 Series
LAND CRUISER PRADO	09/2002 - 12/2010	GRJ120 KDJ120 KDJ125 KZJ120	3.0 D (KZJ120_) 3.0 D-4D (KDJ120, KDJ125, KDJ121) 3.0 D-4D (KZJ12) 4.0 (GRJ120) 4.0 V6 WTi (GRJ120)	Front	U4WD-BUK33	Standard height vehicle.
					U4WD-BUK33+2	Raised height, 50 mm (2") lift.
				Rear	U4WD-BUK41	Suits All Prado 120 Series
LAND CRUISER PRADO	08/2009 - 08/2003	GRJ150 KDJ150	3.0 D-4D (KDJ150_, KDJ150, KDJ155) 4.0 V6 WTi (GRJ150)	Front	U4WD-BUK19	Standard height vehicle. With ABS up to 08/2013
					U4WD-BUK19+2	Raised height, 50 mm (2") lift. With ABS up to 08/2013
				Rear	U4WD-BUK37	Suits All Prado 150 Series
LAND CRUISER PRADO	08/2013 - on	GDJ150 GRJ150	2.8 D-4D (GDJ150_, GDJ155_, GDJ150) 4.0 V6 WTi (GRJ150_, GRJ125_, GRJ150)	Front	U4WD-BUK87+2	Standard height and up to 2" (50mm) lift
				Rear	U4WD-BUK37	Suits All Prado 150 Series

## VOLKSWAGEN

AMAROK	09/2010 - 2022	2HA 2HB S1B S6B S7A S7B	2.0 BiTDI 2.0 BiTDI 4motion 2.0 TDI 2.0 TDI 4motion 2.0 TSI	Front	U4WD-BUK14	Standard height vehicle.
					U4WD-BUK14+2	Raised height, 50 mm (2") lift.
				Rear	U4WD-DBUK714	Drum Upgrade kit
AMAROK	2016 - 2022	S6B S7B	3.0 V6	Front	U4WD-BUK105	Standard height and up to 2" (50mm) lift
				Rear	U4WD-BUK106	Suits all V6 Amarok

 = Ultimate 4WD Brake Upgrade Kit

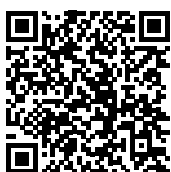
 = Ultimate 4WD Brake Drum Upgrade Kit

 = Ultimate 4WD Big Brake Upgrade Kit (FRONT)

 = Ultimate 4WD Big Brake Upgrade Kit (REAR: Drum to Disc Conversion)



Scan here for  
more info:



# **ULTIMATE** **4WD** **BRAKE BOOSTER** **UPGRADE**

Introducing the **Bendix Ultimate 4WD™ Brake Booster Upgrade**, an essential addition for 4WDs towing or carrying heavy loads. With this easy-to-fit upgrade, braking performance is increased by up to 30%.

The **Bendix Ultimate 4WD™ Brake Booster Upgrade** uses dual-diaphragm technology and is ADR compliant. The upgrade has been designed to be a direct 'bolt-in' replacement for original equipment (OE), single-diaphragm brake boosters.

4WD vehicles fitted with added mass and larger-diameter tyres require higher brake pedal pressure for effective braking.

Brake pedal pressure required and braking effectiveness (including improved stopping distances) can be achieved by fitting a dual-diaphragm booster.



**DUAL**  
**DIAPHRAGM**

## VEHICLE APPLICATIONS

MODEL	SERIES	DESCRIPTION	YEAR	PART #
<b>TOYOTA</b>				
LAND CRUISER	HZJ73/ 75 78/ 79, FZJ73/ 78/ 79	No ABS	1990 - 200	<b>U4WD-BBHZJ7N0ABS</b>
LAND CRUISER	VDJ76/ 78/ 79	No ABS	01/2007 - 08/2012	<b>U4WD-BBLC7N0ABS</b>
LAND CRUISER	VDJ76/ 78/ 79	With ABS or ABS + VSC	08/2012 - On	<b>U4WD-BBLC7ABS</b>
LAND CRUISER	FJ80, FZJ80, HDJ80, HZJ80	No ABS, 2 bolt master cylinder	01/1990 - 12/1997	<b>U4WD-BBLC80</b>



## ULTIMATE 4WD™ BRAKE BOOSTER UPGRADE

### FEATURES:

Partner with Bendix Ultimate 4WD™ Brake Upgrade Kit



Bolt in replacement

ADR Certification details included

### BENEFITS:

- Improved Brake performance for your 4x4
- Reduce Pedal effort and improve braking performance
- Installation instructions included
- All information required for Engineering / Transport Authority



Scan here for  
more info:



# ULTIMATE TOW™

## ELECTRIC BRAKE CONTROLLER

**For peace of mind and ultimate tow control, tow with the Bendix Ultimate Tow™ Electric Brake Controller!**

When the road ahead is all you can think about, place your trust in the Bendix Ultimate Tow™ Electric Brake Controller. The Ultimate Tow™ uses its own unique braking algorithm which provides total control, comfort, and reliability even in the toughest of Australian conditions.

- Fits Ford Ranger and other late model vehicles
- Protection blocking diode included in kit
- 12V, full electronic control unit
- Easy to install, multiple fitment options for remote head
- Compact and rugged aluminium housing, mounts on any angle
- Control & override in one controller
- Open circuit and trailer disconnection indicator
- ALCO ESC compatible



PART NO.  
ULTTOW12V



Easy install

OEM-style dial  
with built-in LED



Compact  
remote head

Open circuit and trailer  
disconnection indicator

FEATURES:	BENEFITS:
Easy install	■ With easy installation, your unit can be installed with just one hole
Compact remote head	■ The remote head can fit in the smallest of knock-out panels in your vehicle
OEM-style dial with built-in LED	■ Slim-line, OEM look with a built-in LED
Open circuit and trailer disconnection indicator	■ The Ultimate Tow™ allows you to adjust your braking force and operate the override function with ease
Compact & rugged aluminium case for heat dissipation	■ Manufactured with a rugged cast alloy enclosure, the Ultimate Tow™ controller is dust and moisture resistant so that even in the harshest braking conditions heat is dissipated efficiently so you can keep going
3-Year warranty	■ Simply wire it up and hit the road, worry free
ALCO ESC compatible	■ Brake with confidence knowing your Ultimate Tow™ is ALCO ESC compatible

**OE  
LOGBOOK  
SERVICING\***

**OE LOGBOOK SERVICING**

Bendix brake components are appropriate for the purpose intended and if installed by qualified staff, to the vehicle manufacturer's specifications, can be used in logbook servicing.

**LEADING  
TECHNOLOGY**

**LEADING TECHNOLOGY**

Bendix engineers are dedicated to building more control, less noise and faster installation into every new product we create.

**CHOOSE THE RIGHT PART FOR YOUR VEHICLE ONLINE AT [BENDIX.COM.AU](https://www.bendix.com.au)**  
**Or Freecall the Bendix Brake Advice Centre on [1800 819 666](tel:1800819666)**

© 2023 FMP Group (Australia) Pty Ltd. Bendix is a trademark of Garrett Advancing Motion Inc. This book is subject to copyright. Except as permitted under the Copyright Act 1968 (Cth), no part of this book may be reproduced or transmitted in any form or by any means, or stored in any retrieval system of any nature, without the prior written permission of the copyright owner. Whilst every endeavour is made to ensure that the information produced is correct, no responsibility for the contents of this supplement is accepted. Reproduction of any kind whatsoever, in whole or in part, is subject to our express approval. For this purpose, please contact the Marketing Department of FMP on (03) 9244 7000 or +61 3 5327 0211 from outside Australia.

NOTE: Brakes are a critical safety system of a vehicle. The brake system should not be interfered with by anybody who does not have the appropriate skills and experience. Brake pads should be replaced by a qualified mechanic.

\* Bendix brake components are appropriate for the purpose intended and if installed by qualified staff, to the vehicle manufacturer's specifications, can be used in logbook servicing.

**FOR MORE INFORMATION ABOUT THESE PRODUCTS**

Freecall the Bendix Brake Advice Centre on  
**1800 819 666** (8am-5pm Monday to Friday EST)  
or **+61 3 5327 0211** from overseas.  
Visit our website [bendix.com.au](https://www.bendix.com.au) / [bendix.co.nz](https://www.bendix.co.nz) or  
email us, [brakeadvicecentre@bendix.com.au](mailto:brakeadvicecentre@bendix.com.au)

***Put your foot down  
with confidence™***

