



GENERAL CT™

DISC BRAKE PADS & ROTORS



**RELIABLE
& DURABLE
BRAKING
PERFORMANCE
FOR 'EVERYDAY'
VEHICLES.**



WWW.BENDIX.COM.AU

*Put your foot down
with confidence™*

GENERAL CT™ DISC BRAKE PADS

Disc brake pads combining leading technologies for smoother, cleaner & quieter braking.

- Whisper quiet braking with noticeably less dust
- Braking noise and vibration virtually eliminated
- Silky smooth operation and improved stopping
- Long wearing for lasting braking performance



SCAN HERE FOR MORE INFO!



- Whisper quiet braking with noticeably less dust
- Virtually no brake noise or vibrations



- Advanced friction material that's more durable
- Improved stopping, reduced rotor wear and dust



- No bedding-in is needed, for more efficient installation
- Instant pedal feel from the first brake application

Smoother & quieter

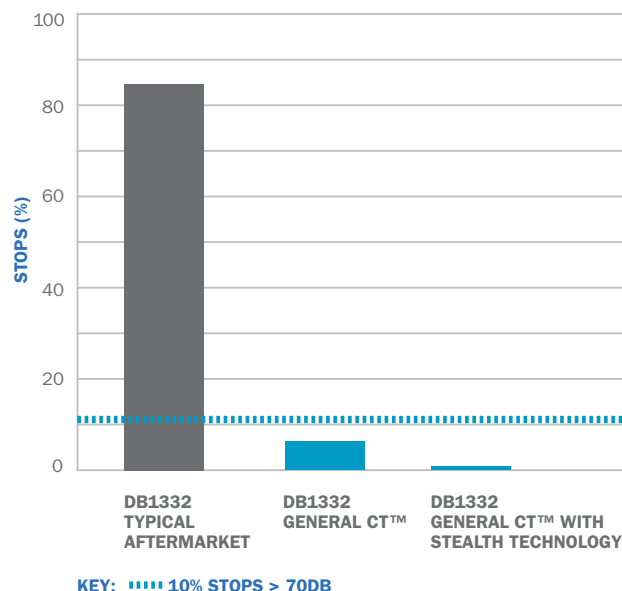
WE PUT REAL EFFORT INTO AUSTRALASIAN CARS ON AUSTRALASIAN ROADS AND THAT IS WHY BENDIX GENERAL CT™ IS UNIQUE.

Bendix General CT™ is quieter than any pads on the market. As the only manufacturer in Australia with state of the art testing facilities, Bendix develops and tests brake pads to ensure you get the quietest, safest brake pads.

At Bendix, we invest considerable effort into research and development of brake pads that are designed for cars in the Australasian region. While competitors can easily copy the shape or look of our pads, there is no other brand out there that has the knowledge of, or commitment to the local market, as well as the required technology, to produce anything that comes close to the Bendix General CT™ product.

Bendix General CT™ is now better than ever with the addition of Hybrid Fusion Technology, a unique mix of technologies and compounds for superior braking performance. Together with STEALTH Advanced Technology for reduced noise and vibration, General CT™ stops faster and quieter more often than any other brake pad, as shown on the chart to the right.

DYNAMOMETER TEST RESULTS



Stealth Advanced Technology



GENERAL CT™ PADS HAVE ALWAYS BEEN DESIGNED TO TACKLE THE ISSUES CONSUMERS DISLIKE MOST: NOISE AND DUST, WITHOUT COMPROMISE TO STOPPING PERFORMANCE.

Now Bendix have gone one better by cloaking the top references in the General CT™ range in STEALTH Advanced Technology. Bendix engineers used high tech laser and dynamometer equipment to study the surface contact between each individual brake pad and rotor and identified the optimum contact surface area.

STEALTH Advanced Technology delivers custom diamond shaped brake pads that have no radial features so they do not sustain vibration from contact between rotor and friction, virtually eliminating noise and vibration at the source.

The result is Bendix General CT™ with STEALTH Advanced Technology; the quietest, smoothest and cleanest pad we've ever created.



Whisper quiet braking, silky smooth operation, noticeably less dust. The next generation brake pad.

Sure stopping



MOST BRAKE PADS USE ABRASIVE FRICTION TO SLOW THE VEHICLE, BUT WITH BENDIX GENERAL CT™ IT'S COHESIVE FRICTION.

When compared to the aggressive abrasive action of traditional friction materials, the Ceramic Technology used in General CT™ means almost no brake dust and minimal rotor wear. With cohesive friction, a protective friction film from the pads is transferred to the rotor surface and braking force is achieved by continuously breaking the adhesive bonds between the brake pad and the friction film on the rotor.

Bendix Ceramic Technology is manufactured using a premium grade ceramic formulation for superior noise, vibration and harshness (NVH) control.

The benefits are consistent pedal feel, enhanced durability, high fade resistance, reduced noise and vibration, minimal dust and improved stopping performance.

Fitting General CT™ means less dust without sacrificing braking performance.

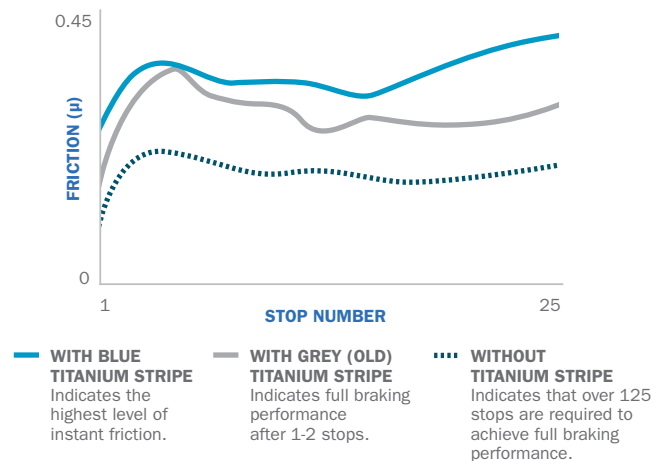
No bedding-in



BENDIX BLUE TITANIUM STRIPE SAVES YOU TIME AND MONEY.

Bendix Blue Titanium Stripe saves you time and money. Blue Titanium Stripe gives instant friction and positive pedal feel, the moment your customers drive out of the workshop. The high friction titanium coating on the brake pad surface mates quickly to the rotor when brakes are first applied and full braking performance is achieved in a few stops. Normal bedding-in procedure is a minimum of 30 stops. That's 10 minutes of your time that could be better spent on other jobs!

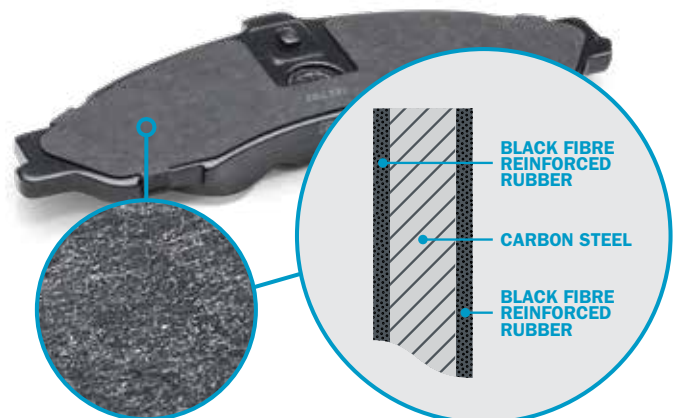
BLUE TITANIUM STRIPE COMPARISON



Smooth and quiet driving

BENDIX NOISE ABSORBING SHIMS ENSURE AN EVEN SMOOTHER RIDE.

Bendix noise absorbing shims are designed to effectively prevent the transmission of vibration and noise from the brake pad by reducing the effect of the dynamic forces generated during braking, for the life of the brake pad.



Superior stopping confidence

FIT WITH
CONFIDENCE

CLEANER BRAKING WITH NOTICEABLY LESS DUST.

Most drivers look for a balance between value and braking efficiency. Dusty wheels and shortened pad and rotor life caused by abrasive brake pads are often an unnecessary compromise.

Using the latest in ceramic friction material technology, excellent stopping performance is achieved, without the brake dust. Fitting abrasive brake pads means dusty wheels due to brake pad residue and rotor dust.

By eliminating brake dust and keeping the car's wheels clean, fitting Bendix General CT™ brake pads means happier customers. Because Bendix never stops innovating, the formulation enhanced friction material utilised in STEALTH Advanced Technology means even less brake dust.



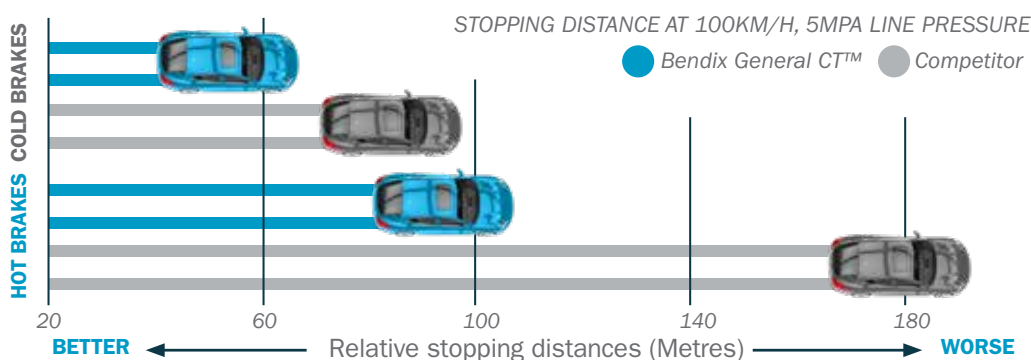
Other OE Fitment Pads



With Bendix General CT™

EXPERIENCE SAFER BRAKING WITH REDUCED STOPPING DISTANCES.

The graph below shows how Bendix General CT™ reduces vehicle stopping distances for superior safety. The vehicle with the competitor brake pads travels over 30m more before stopping compared to the vehicle using Bendix General CT™.



Why choose General CT™ Disc Brake Pads?

Features

Benefits

STEALTH Advanced Technology	Whisper quiet braking. Silky smooth operation. Noticeably less dust.
Ceramic technology	Improved stopping performance, low dust, low rotor wear, enhanced durability.
Blue Titanium Stripe	No bedding-in required. Improved pedal feel from the first stop.
Noise dampening shims	Reduced transmission of vibration and noise from the brake pad.
Vibration and harshness control	Product engineered and tested to eliminate noise and vibration.
Designed for passenger vehicles	Specifically suited for general purpose usage, and by vehicle type.
Brake wear indicator	It's now easy to see when to change brake pads.

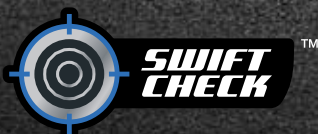
GENERAL CT™ DISC BRAKE ROTORS

Disc brake rotors designed to provide reliable, durable and confidence inspiring braking performance.

- Industry-first visual wear indicator
- Reliable and confidence inspiring braking
- High quality metallurgy for improved heat dissipation
- 'E+ Original Equipment Fit' for easy installation
- Suitable for many makes and models



SCAN HERE FOR MORE INFO!



- Progressive visual indicator
- Quick-check disc brake rotor wear



- Oil free
- Corrosion resistant
- Swap and go



- Direct OE replacement
- Meets or exceeds OE specifications

SwiftFit™ Coating



MORE EFFICIENT INSTALLATION.

The new Bendix General CT™ disc brake rotors feature Bendix's clever SwiftFit™ surface protection, which allows the rotor to be fitted immediately without the need to clean anti-rust oil or coating from the surface. The SwiftFit™ coating also prevents corrosion of the rotor resulting in

unlimited shelf life, longer fault free service and a rust-free rotor hat, which is often visible behind open alloy wheels. Frequently with uncoated conventional rotors, corrosion can lead to the rotor mating with the wheel hub face over time, creating a vibration that will feel like a wheel imbalance.

Original Equipment Fit



AN EXACT FIT EVERY TIME.

General CT™ disc brake rotors deliver an 'E+ Original Equipment Fit' and are designed to be a direct replacement for OE rotors; they're tested for braking capabilities,

speed sensitivity and cold performance. This performance provides both workshops and owners the peace of mind in knowing that their rotors are manufactured to exacting standards and deliver optimum results.

Why choose General CT™ Disc Brake Rotors?

Features

Benefits

Quality Metallurgy	Improved thermal stability and heat dissipation, minimising the likelihood of brake fade. Added longevity.
SwiftCheck™	At a glance visual wear indicator that helps workshops and owners identify remaining wear life and when rotor replacement is needed.
SwiftFit™ Coating	Faster installation SwiftFit™ coating for fitting without pre-cleaning, with corrosion inhibitors for a great look and will not degrade over time.
E+ Original Equipment Fit	Designed as a direct replacement for OE rotors, meeting or exceeding all OE requirements.



The General CT™ Disc Brake Rotor range was developed to provide great results with all disc brake pad formulations, but for optimum performance, they're best matched with the Bendix range of brake pads.

Award-winning disc brake rotors

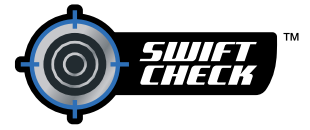
OUR COMMITMENT TO INNOVATION.

Among strong competition, Bendix General CT™ Disc Brake Rotors took out the '2024 Most Innovative New Aftermarket Product (Parts)' category at the Australian Auto Aftermarket Awards.

General CT™ Disc Brake Rotors deliver reliable, durable and confidence inspiring braking performance for 'everyday' passenger vehicles, and also introduce an industry-first SwiftCheck™ innovation. SwiftCheck™ provides a fast and convenient visual indicator of rotor wear, letting motor trade professionals estimate remaining rotor life without the need to measure rotor thickness, allowing them to decide on part replacement.



Introducing industry-first SwiftCheck™

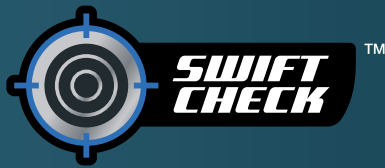


AT A GLANCE WEAR INDICATOR.

A market-first innovation for Australia and New Zealand, SwiftCheck™ provides a fast and convenient visual indicator of rotor wear, letting motor trade professionals estimate remaining rotor life without the need to measure rotor thickness, allowing them to decide on part replacement. The feature also provides added convenience and peace of mind for vehicle owners, who can inspect the rotors

themselves and take appropriate action if needed, such as when preparing for an extended driving holiday or similar.

SwiftCheck™ is a machined feature that creates circular grooves on the rotor surface that narrow and disappear progressively as the rotor wears. Once the wear indicator displays a singular dot in the centre, this indicates it's time for the rotor to be changed.



HOW TO READ THE SWIFTCHECK™ WEAR INDICATOR

SwiftCheck™ is a machined feature that creates circular grooves on the rotor surface that narrow and disappear progressively as the rotor wears. Once the wear indicator displays a singular dot in the centre, this indicates it's time for the rotor to be changed.



New rotor
Grooves & dimple
@ 3mm



80% worn rotor
Intermediate groove
almost gone



50% worn rotor
Outer groove thickness
starts to narrow



85% worn rotor
Intermediate groove
gone



65% worn rotor
Outer groove almost
gone



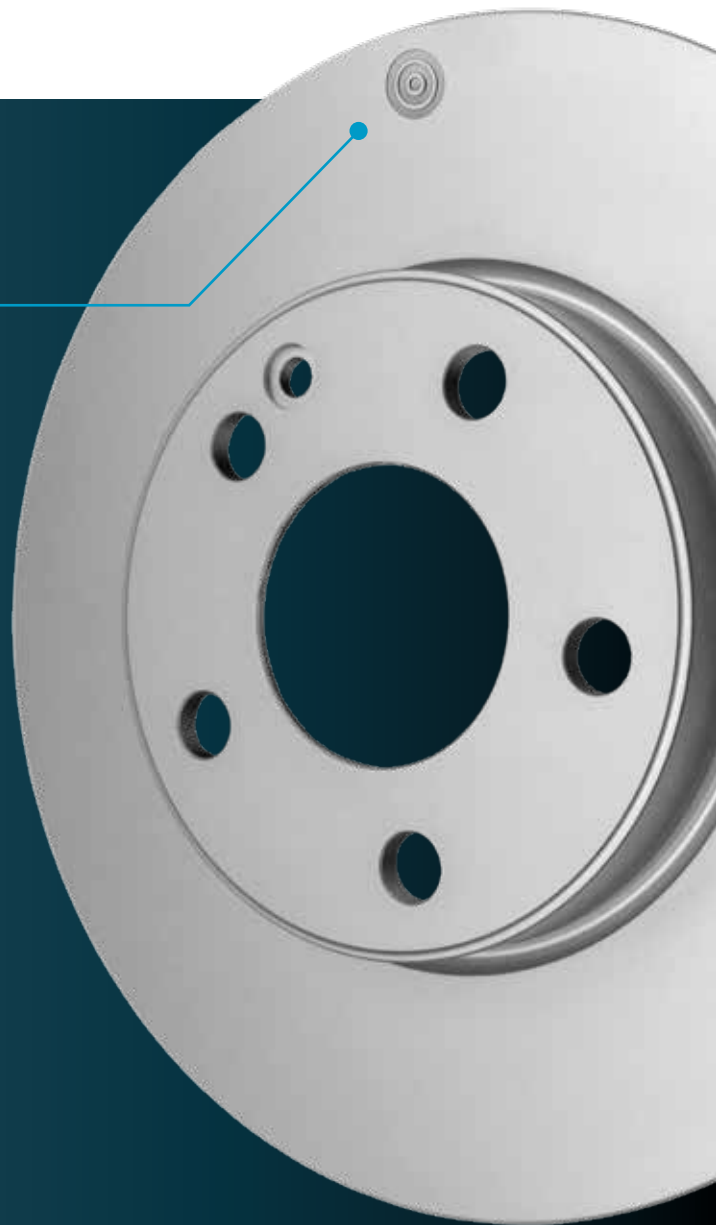
90% worn rotor
Centre dimple
almost gone



75% worn rotor
Outer groove gone



**100%
replace
rotor**
Centre dimple
almost gone



GENERAL CT™ DISC BRAKE ROTORS



Bendix General CT™ pads and rotors excel in testing



RESULTS ARE IN, REINFORCING THE MANY BENEFITS OF BENDIX'S GENERAL CT™ RANGE.

Internal Bendix testing completed to Society of Automotive Engineers (SAE) international standards*, has highlighted the benefits of Bendix's general purpose General CT™ disc brake pads and rotors compared to both direct competitor and OE standard equivalents.

The testing, which was conducted on a VF Commodore and Toyota Corolla test rig, pitted Bendix General CT™ pads against three prominent competitors as well as OE standard components. Testing parameters included pad and rotor life, dust, friction level, friction stability, warm noise and cold noise performance. All the pads were tested on General CT™ rotors to remove any variations between the OE rotors of the test vehicles.

In all cases, Bendix General CT™ brake pads met OE performance requirements and exceeded OE standards in

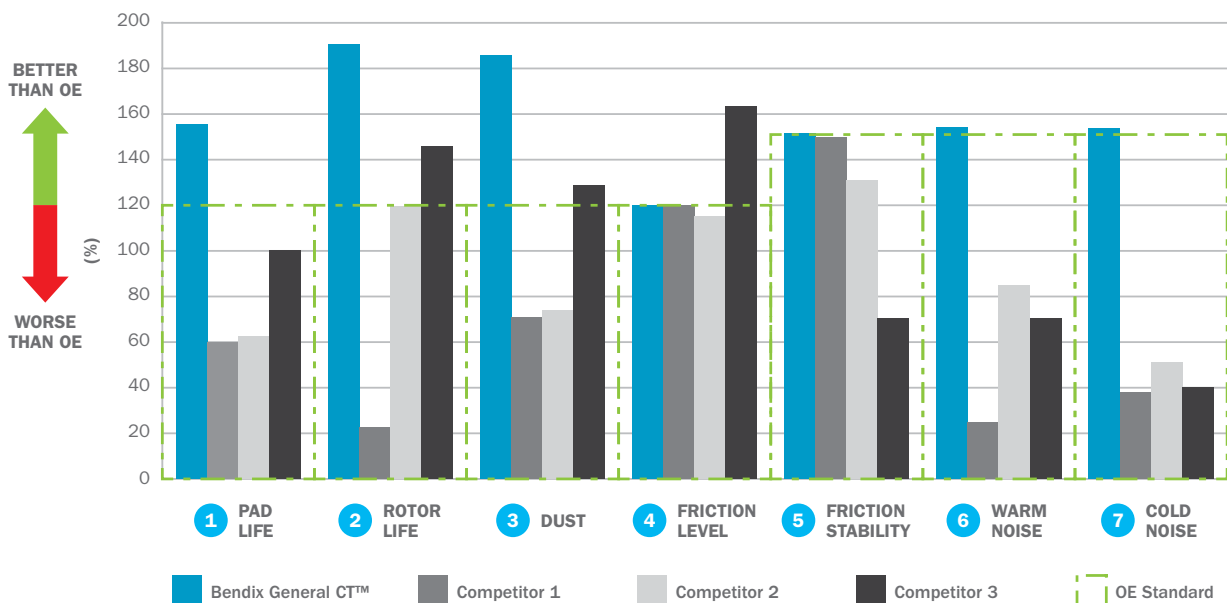
warm and cold noise performance (see bar groupings 6 and 7 in accompanying illustration). It also excelled against both OE and competitors in pad life (grouping 1), low dust performance (grouping 3) and rotor life (grouping 2).

Of the competitor brands, most fell well short of meeting OE standards when it came to cold and warm noise operation and pad life, with two of the three also failing to meet OE dust measures.

The Bendix General CT™ pads topped the charts across six categories (groupings 1, 2, 3, 5, 6 and 7) and finished equal second in 'friction levels' (grouping 4), while still meeting the OE standard. Testing the combination of Bendix General CT™ pads with Bendix General CT™ rotors showed significantly longer rotor and pad life.

As confirmed by the testing, General CT™ disc brake pads feature proven compounds that deliver reliable and secure stopping performance, coupled with a smooth and consistent pedal feel.

BENDIX GENERAL CT™ DISC BRAKE ROTORS AND PADS VERSUS COMPETITORS AND OE STANDARD



**OE
LOGBOOK
SERVICING***

OE LOGBOOK SERVICING

Bendix brake components are appropriate for the purpose intended and if installed by qualified staff, to the vehicle manufacturer's specifications, can be used in logbook servicing.

**LEADING
TECHNOLOGY**

LEADING TECHNOLOGY

Bendix engineers are dedicated to building more control, less noise and faster installation into every new product we create.

CHOOSE THE RIGHT PART FOR YOUR VEHICLE ONLINE AT BENDIX.COM.AU
Or Freecall the Bendix Brake Advice Centre on **1800 819 666**

FOR MORE INFORMATION

Freecall the Bendix Brake Advice Centre
on 1800 819 666 (8am-5pm Monday to Friday EST)
or +61 3 5327 0211 from overseas.
brakeadvicecentre@bendix.com.au
bendix.com.au or **bendix.co.nz**

*Put your foot down
with confidence™*



*Bendix brake components are appropriate for the purpose intended and if installed by qualified staff, to the vehicle manufacturer's specifications, can be used in logbook servicing.